



## Antiques & Interiors, 20th Aug, 2025 - 21st Aug, 2025

- |   |   |
|---|---|
| <p>1 Twelve assorted Royal Crown Derby figures to include 'Treasures of Childhood Fleur'; 'With Love'; 'I love You'; Scottish Teddy 'Fraser'; Scottish Teddy 'Shona'; 'Calico Kitten'; 'Bank Vole'; etc.<br/><b>£70-150</b></p> <p>2 A pair of Continental white porcelain reclining Greyhounds, 26cm long x 13cm high.<br/><b>£40-80</b></p> <p>3 A near pair of Wedgwood Jasperware tri-colour cylindrical pots/ bases, both with blue ground white Neoclassical figural decoration, one with yellow coloured borders, 6.5cm high; the other green coloured borders, 6.3cm high.<br/><b>£40-80</b></p> <p>4 A set of six Royal Worcester hand-painted miniature tea cups and saucers, comprising two painted with Highland Cattle signed H. Stinton; two painted with Sheep signed E. Barker; and two with Pheasants signed J A S Stinton; all with puce coloured marks.<br/><b>£100-200</b></p> <p>5 A Royal Worcester green ground twin-handled hand-painted vase, decorated by Hawkins, painted with a colourful panel of fruit and flowers within a richly gilded border, green printed marks, 22cm high.<br/><b>£150-300</b></p> <p>5A A group of fourteen assorted Royal Crown Derby paperweights comprising thirteen various birds and one modelled as Humpty Dumpty.<br/><b>£70-150</b></p> <p>6 A Shelley Art Deco bone china tea service, in the 'Vogue' shape and 'Sunray' pattern, No.11742, designed by Eric Slater c.1930, comprising tea pot; coffee pot; six cups and saucers (plus a lone cup); milk jug; two sugar bowls; two larger plates (one with a hairline crack); two oblong plates (possibly sandwich plates); and two small bowls, possibly soup or sweet dishes.<br/><b>£400-600</b></p> <p>7 A Griselda Hill pottery model of a cat, decorated with roses, 18cm high; together with a Griselda Hill pottery mug, decorated with branches of fruiting vine, 9cm high.<br/><b>£30-70</b></p> <p>8 A Monart glass Mushroom lamp and shade, mottled yellow, orange and brown with gold coloured inclusions and typical decoration of whorls, with original chrome plated double light lamp fixture, 34cm high.<br/><b>£400-600</b></p> | <p>9 A Vasart glass tulip lamp, mottled blue and green with yellow flecked decoration, signed, lamp fitting loose, 25cm high.<br/><b>£50-100</b></p> <p>10 A Monart vase, shape QG, mottled orange, green and opaque white with gold coloured inclusions, annealing cracks, 26cm high.<br/><b>£20-50</b></p> <p>11 A Monart glass vase, shape MF, mottled clear and green with gold coloured inclusions, 22cm high.<br/><b>£70-150</b></p> <p>12 A Monart glass bowl, shape UB, mottled clear and green glass with gold coloured inclusions, 14cm diameter x 4cm high.<br/><b>£30-70</b></p> <p>13 A Monart glass bowl, shape MA, in the Royal Wedding Colour combination, remains of original paper label to base, 20cm diameter x 9cm high.<br/><b>£50-100</b></p> <p>14 A group of three pieces of Scottish glassware to include a Vasart glass vase mottled purple and pink with gold coloured inclusions, signed, 18.5cm high; a Strathearn glass vase mottled black and green with gold fleck detail, 24cm high; and a Strathearn glass vase mottled black and blue with gold coloured inclusions, 20cm high.<br/><b>£50-100</b></p> <p>15 A Highland Stoneware vase, decorated with red poppy, printed marks, signed with artists initials 'YM', 16cm high.<br/><b>£20-50</b></p> <p>16 A Moorcroft pottery blue ground vase, decorated with Hibiscus, impressed marks, 13.5cm high.<br/><b>£30-70</b></p> <p>17 A Moorcroft pottery vase, decorated in the Claremont pattern, impressed marks and blue painted initials, 18.5cm high.<br/><b>£400-600</b></p> <p>18 A 19th century Herculaneum English Creamware Prodigal Son plate, Zyn Erfdeel (His Inheritance), impressed marks, 25cm diameter.<br/><b>£30-70</b></p> <p>19 A Japanese porcelain blue and white vase, decorated with a Kingfisher, six character mark to base, 15cm high.<br/><b>£40-80</b></p> |
|---|---|



## Antiques & Interiors, 20th Aug, 2025 - 21st Aug, 2025

- |  |   |
|--|---|
| <p>20 A Chinese porcelain octagonal shaped footed bowl, the interior with turquoise blue ground, the exterior with coral coloured ground decorated with gilded foliage, cranes, ducks and insects, red painted seal mark to base, 14cm diameter x 6.5cm high.<br/><b>£40-80</b></p> <p>21 A Chinese bronze twin-handled censor of small size, raised on three tapered cylindrical prong supports, Xuande six character mark but later, 9cm diameter (handle to handle) x 7cm high.<br/><b>£40-80</b></p> <p>22 A pair of Chinese porcelain blue and white Nanking Cargo tea bowls and saucers, both bearing original Christies lot labels from The Nanking Cargo Auction, No.5064.<br/><b>£50-100</b></p> <p>23 A late 18th/ early 19th century engraved horn 'Friendship Love &amp; Truth' marriage beaker, of tapered cylindrical form, engraved with male and female figures either side of a shield, below inscription 'Friendship, Love &amp; Truth', with further initials 'AT, WW', together with other motifs to include owl on branch, crescent moon, beehive, horse, etc, 8cm diameter at rim x 10cm high.<br/><b>£100-200</b></p> <p>24 A carved wooden tea caddy in the form of an apple, with later foil lined interior, 11cm diameter x 12cm high.<br/><b>£70-150</b></p> <p>25 An early 20th century Glasgow School Arts &amp; Crafts brass vase of square form, embossed with a Glasgow rose and square shaped motifs, 14.5cm high.<br/><b>£50-100</b></p> <p>25A * Piero Fornasetti, a Stoviglie malachite plate with gilded decoration of cup and saucer, printed marks, 26cm diameter.<br/><b>£50-100</b></p> <p>25B * Louis Comfort Tiffany, a Favrite iridescent glass bowl with frilled rim, signed 'LCT Favrite 1276', 11cm diameter x 5cm high, restuck chip to side/ rim.<br/><b>£40-80</b></p> <p>26 A late 19th/ early 20th century brass cased carriage clock, Alfred &amp; Son, Great Yarmouth, the white dial with black painted Roman numerals, 13.5cm high with handle raised, in original leather lined case.<br/><b>£40-80</b></p> | <p>27 An early 20th century white metal and rose cut diamond set flower cluster bar brooch, 61.1mm wide, gross weight 3.7 grams.<br/><b>£50-100</b></p> <p>28 An early 20th century white and yellow metal emerald and diamond brooch, centred with one emerald cut emerald, estimated to weight 0.77ct, one oval old cut diamond estimated to weigh 0.27ct, two old cut diamonds estimated to weigh 0.38ct each, and eleven various cut diamonds, ranging from 0.04ct to 0.18ct, in blue leather and velvet lined box for Mackay &amp; Chisholm, Edinburgh, 62.5mm wide, gross weight 6 grams.<br/>Gemmology Report available.<br/><b>£600-900</b></p> <p>29 A group of three assorted yellow metal bar brooches, one centred with a split pearl, stamped '9ct'; one centred with an oval faceted amethyst coloured stone flanked by two small split pearls; and the other centred with a crescent shaped motif, decorated with split pearls; gross weight 8.2 grams.<br/><b>£50-100</b></p> <p>30 A 9ct gold necklace, 4.4 grams; together with remaining 9ct gold and yellow metal items to include necklace, bracelet, tangled necklace, circular pendant, and a pair of earrings, gross weight 5.5 grams.<br/><b>£200-300</b></p> <p>31 A silver grey Baroque pearl necklace, 57cm long, gross weight 78.6 grams; together with a pair of larger similarly coloured Baroque pearl pendant earrings, gross weight 16.3 grams.<br/><b>£50-100</b></p> <p>32 A yellow metal and gem set pendant necklace, the necklace stamped 'K18', gross weight 10.8 grams.<br/><b>£400-600</b></p> <p>33 An early 20th century yellow metal, amethyst and split pearl Art Nouveau style pendant, stamped '9ct', suspended on yellow metal chain stamped '9c', gross weight 5.3 grams.<br/><b>£70-150</b></p> <p>34 A 9ct gold pendant necklace, 6 grams.<br/><b>£120-180</b></p> <p>35 A 9ct gold gem set pendant and chain, gross weight 5.1 grams.<br/><b>£70-150</b></p> <p>36 A 9ct gold oval locket, suspended on 9ct gold chain, 7.8 grams.<br/><b>£150-250</b></p> |
|--|---|



## Antiques & Interiors, 20th Aug, 2025 - 21st Aug, 2025

- |  |   |
|--|---|
| <p>37 A red amber type graduated bead necklace, 75 grams.<br/><b>£70-150</b></p> <p>38 A 9ct gold bangle, 13.4 grams.<br/><b>£250-350</b></p> <p>39 A vintage yellow and white metal multi-coloured semi-precious gem set peacock brooch, stamped '18ct', 34.6mm long, gross weight 5.7 grams.<br/><b>£200-300</b></p> <p>40 A 9ct gold, garnet and pearl set bird brooch, 31.7mm wide, gross weight 4.6 grams.<br/><b>£150-250</b></p> <p>41 A late 19th/ early 20th century yellow metal, split pearl, garnet and black enamel circular brooch, 39mm diameter, gross weight 15.5 grams.<br/><b>£600-800</b></p> <p>42 A yellow metal, split pearl and garnet crescent shaped brooch, 40.1mm wide, gross weight 7.4 grams.<br/><b>£150-300</b></p> <p>43 A late 19th/ early 20th century yellow metal and gem set brooch, 35.8mm wide, gross weight 5.8 grams.<br/><b>£100-200</b></p> <p>44 A late 19th/ early 20th century yellow metal, gem set and blue enamel circular locket brooch, the reverse with circular locket panel, 24.7mm diameter, gross weight 8 grams.<br/><b>£250-500</b></p> <p>45 An early 20th century white and yellow metal diamond chip, pearl and blue enamel brooch of circular form, centred with a small diamond on engine turned blue enamel ground within a border of small diamonds divided by seed pearls, 25.3mm diameter, gross weight 7.7 grams.<br/><b>£100-200</b></p> <p>46 A late 19th century yellow metal and black enamel mourning oval shaped brooch, the locket enclosing curled hair memento, the reverse engraved 'D&amp;MB, Died 1833', 52.3mm wide.<br/><b>£40-80</b></p> <p>47 An Arts &amp; Crafts style white metal, moonstone and amethyst cabochon bracelet, approximately 23cm long, 26.8 grams.<br/><b>£50-100</b></p> <p>48 A yellow and white metal pink sapphire set bracelet, the clasp stamped '375', gross weight 6.6 grams.<br/><b>£120-180</b></p> | <p>49 A 14ct white and yellow gold bracelet with diamond set central panel, some links stamped '585', the reverse of the white metal diamond set panel stamped '585, inscribed 'Jessie May', 19cm long, gross weight 27.6 grams.<br/><b>£800-1,200</b></p> <p>50 A 9ct gold and opal bracelet, 19cm long, gross weight 11.2 grams.<br/><b>£200-300</b></p> <p>50A An early/ mid 20th century Arabian yellow metal gem set and enamel buckle and belt, tests as 18ct gold, the belt formed from thirteen rectangular panels pierced with heart, arrow and foliate motifs, with a separate section of belt formed from two identical rectangular panels, the shaped oval buckle pierced and centred with a blue enamel bird with outstretched wing, one wing missing, set with ruby, emerald and clear coloured gems, in a fitted box inscribed 'Soni Dayalgi Ranchhoddas &amp; Sons, ADEN-CRATER' (Arabia), thirteen panel section belt 69.5cm long x 3.5cm thick, two panelled belt section 11cm long x 3.5cm, buckle 9cm x 7.8cm, gross weight 161.7 grams.<br/><b>£7,000-10,000</b></p> <p>50B A 9ct gold charm bracelet, suspending 15 assorted charms to include banknote, teapot, acorn, hedgehog, postbox, 'B' etc., with heart shaped lock, gross weight 39.6 grams<br/><b>£1,000-1,500</b></p> <p>50C A yellow metal gatelink bracelet, stamped 9c, 15.1 grams<br/><b>£300-500</b></p> <p>50D A 9ct gold hollow link bracelet, 18cm long, 13.3 grams<br/><b>£300-500</b></p> <p>50E A 9ct gold ingot pendant on 9ct gold chain, the ingot 8 grams, the chain 46cm long, 7.7 grams, total combined weight 15.6 grams<br/><b>£350-550</b></p> <p>50F A ladies 18ct gold Venus bangle watch, the rectangular dial with arabic numerals, inscribed Venus 17 Rubis, Antimagnetic, Swiss Made, gross weight 17.2 grams<br/><b>£700-900</b></p> <p>50G A ladies 14ct gold cased Tissot Automatic bracelet wristwatch, the circular dial with baton numerals, on a 9ct gold bracelet strap, gross weight 24 grams<br/><b>£650-900</b></p> |
|--|---|



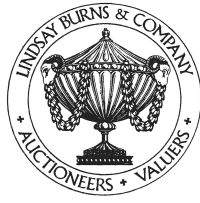
## Antiques & Interiors, 20th Aug, 2025 - 21st Aug, 2025

- |   |  |
|---|--|
| <p>50H A 9ct gold Luckenbooth brooch, 3.5cm x 4.5 cm, 9.3 grams<br/><b>£200-300</b></p> <p>50I A 9ct bracelet with a 9ct gold heart shaped lock, 7.4 grams<br/><b>£120-180</b></p> <p>50J A 9ct gold mounted Cairngorm pendant suspended on yellow metal chain stamped '9k', gross weight 10.6 grams<br/><b>£120-180</b></p> <p>51 A yellow metal, sapphire and diamond set pendant, approximately 42.8mm long, gross weight 8 grams.<br/><b>£300-500</b></p> <p>52 A yellow metal and enamel Seaforth Highlanders bar brooch, inscribed on banner 'Cuidich N Righ', stamped '9ct', 47.2mm wide, gross weight 4 grams.<br/><b>£70-150</b></p> <p>53 A white metal, split pearl and ruby coloured oval faceted gem set Arts &amp; Crafts style dress ring, size Q; together with six other assorted white metal and coloured semi-precious gem set dress rings.<br/><b>£50-100</b></p> <p>53A An American Masonic white gold dress ring set with a sapphire, the band chased with twin eagles, number '32' and a Hebrew letter, in unmarked white gold mount, size R, gross weight 12.7 grams.<br/><b>£200-300</b></p> <p>53B A gold ring, set with a single diamond, framed in a square shaped setting, in unmarked gold mount, size R, gross weight 7.1 grams.<br/><b>£120-180</b></p> <p>53C An 18k gold dress ring, set with a single diamond in plain tapering band, engraved maker's monogram and stamped '750', size L, gross weight 5.8 grams.<br/><b>£200-300</b></p> <p>53D A 14k white gold dress ring, set with a single diamond in a tapered mount and plain band, size Q1/2, gross weight 7.5 grams.<br/><b>£180-250</b></p> <p>53E A diamond cluster ring, set with a central old cushion cut diamond, estimated to weigh 0.47ct, surrounded by eight further old cushion cut diamonds, each estimated to weigh 0.11ct, in unmarked gold mount, size R, gross weight 5.6 grams.<br/>Gemmology Report available.<br/><b>£150-250</b></p> | <p>53F A large 18k gold three stone ring, set with a central diamond and two sapphires in tapered mount, stamped 'K18', size P, gross weight 10.6 grams.<br/><b>£300-500</b></p> <p>53G A Victorian gents 9ct gold signet ring, set with a shield shaped bloodstone, with twin band and pierced shoulders, hallmarked Chester 1898, size Q, gross weight 3.8 grams.<br/><b>£80-120</b></p> <p>53H A 9ct gold large ring, set with an oval sapphire and two diamonds, with 9ct gold import hallmarks, size R1/2, gross weight 5.9 grams.<br/><b>£120-150</b></p> <p>53I A gold single stone ring, with antique style chased foliate shoulders, set with a triangular shaped blue stone, in unmarked gold mount, size R, gross weight 3.4 grams.<br/><b>£150-250</b></p> <p>53J A 14k gold large ring set with a single diamond, with tapering band, stamped '14k', size L, gross weight 7.2 grams.<br/><b>£200-250</b></p> <p>53K An Edwardian 18ct gold dress ring, set with an old cut diamond in pierced claw mount, the tapering band with reeded shoulders, by Deakin &amp; Francis, Birmingham 1909, size Q1/2, gross weight 5.6 grams.<br/><b>£200-300</b></p> <p>53L A 14k gold large ring set with three diamonds, tapering band with shaped shoulders, stamped '14k', size R1/2, gross weight 6.4 grams.<br/><b>£200-300</b></p> <p>53M An 18k white gold ring, set with a princess cut diamond and seven graduated baguette cut diamonds to each shoulder, stamped '750' and '18k', maker's mark JN over R, size L, gross weight 6.6 grams.<br/><b>£250-350</b></p> <p>53N A 9ct gold signet ring, set with a hexagonal hard stone, in textured gold mount, size Q, gross weight 6.4 grams.<br/><b>£100-150</b></p> <p>53O An 18ct gold large signet ring, with the initial 'D' highlighted with ten diamonds, stamped '750', size W, gross weight 12.9 grams.<br/><b>£400-600</b></p> <p>53P A 9ct gold ring, set with a single diamond in upright pierced claw mount, size L, gross weight 2.5 grams.<br/><b>£50-100</b></p> |
|---|--|



## Antiques & Interiors, 20th Aug, 2025 - 21st Aug, 2025

- |   |  |
|---|--|
| <p>53Q A large gold ring, set with a light blue zircon, in unmarked gold mount, size Q, gross weight 9 grams.<br/><b>£150-200</b></p> <p>53R A 9ct gold gents dress ring, set with a single diamond in tapering band with textured shoulders, size S, gross weight 5 grams.<br/><b>£100-150</b></p> <p>53S A 14k gold large ring, set with a large opalescent cabochon stone and with small diamonds to the shoulders, stamped '585', size R, gross weight 9.7 grams.<br/><b>£200-300</b></p> <p>54 Four assorted 9ct gold dress rings, gross weight 5.8 grams.<br/><b>£120-180</b></p> <p>55 A 19th century 15ct gold, split pearl and emerald ten stone dress ring, size N, gross weight 1.2 grams, in a heart shaped ring box.<br/><b>£40-80</b></p> <p>56 An 18ct gold and diamond seven stone ring, size M1/2, gross weight 2.3 grams.<br/><b>£70-150</b></p> <p>57 A 9ct gold, garnet and diamond chip cluster ring, size N1/2, gross weight 2.4 grams.<br/><b>£50-100</b></p> <p>58 A yellow metal and sapphire three stone dress ring, size M, gross weight 2.1 grams.<br/><b>£50-100</b></p> <p>59 A 9ct gold, ruby and diamond chip dress ring, centred with faceted heart shaped ruby, flanked by triangular shaped panels on either side, each set with six small diamonds, size O, gross weight 3 grams; together with a yellow metal dolphin ring, stamped '375', size L, 1.3 grams.<br/><b>£70-150</b></p> <p>60 Three assorted 18ct gold rings, one size K; two size N; gross weight 6.8 grams.<br/><b>£250-400</b></p> <p>61 An 18ct gold three stone diamond ring, size M1/2, gross weight 2.5 grams.<br/><b>£100-200</b></p> <p>62 Two rings to include an early 20th century garnet, split pearl and turquoise cluster ring, size M, gross weight 1.9 grams; together with a yellow metal split pearl Navette ring, stamped '18ct', size N, gross weight 3.2 grams.<br/><b>£120-180</b></p> | <p>63 A 19th century yellow metal Loveheart ring, inscribed 'A. Geekie &amp; J. Shaw MD 25th December 1838', size O, 3.8 grams.<br/><b>£100-200</b></p> <p>64 A 15ct gold, garnet and split pearl dress ring, size N, (two split pearl stones missing), gross weight 2.2 grams.<br/><b>£70-150</b></p> <p>65 An 18ct gold and diamond five stone ring, size S, gross weight 3 grams.<br/><b>£120-180</b></p> <p>66 A yellow metal, turquoise and diamond three stone ring, size O, gross weight 5.4 grams.<br/><b>£200-300</b></p> <p>67 A white metal and diamond cluster ring, centred with a brilliant cut diamond estimated to weigh 0.60ct, in a border of six brilliant cut diamonds, each estimated to weigh 0.50ct, total diamond weight approximately 3.60ct, the shank stamped '18ct', size S1/2, gross weight 6.5 grams.<br/><b>£3,000-5,000</b></p> <p>68 A white and yellow metal five stone diamond ring, centred with one old cushion cut diamond, estimated to weight 0.48ct, and four old cushion cut diamonds, ranging from 0.19ct to 0.39ct, size R1/2, gross weight 2.4 grams.<br/>Gemmology Report available.<br/><b>£300-500</b></p> <p>69 A yellow metal, ruby and diamond cluster ring, the shank stamped '18ct', size N, gross weight 5.1 grams.<br/><b>£400-600</b></p> <p>70 Two rings to include a 9ct gold and garnet cluster ring, size P, gross weight 2.3 grams; together with a 9ct gold and Cairngorm set single stone ring, size P, gross weight 4.4 grams.<br/><b>£120-180</b></p> <p>71 A yellow metal, emerald and diamond cluster ring, centred with one oval faceted emerald, calculated to weigh 1.45ct, surrounded by ten round brilliant cut diamonds, each estimated to weigh 0.15ct, the shank stamped '18ct', size W1/2, gross weight 5.6 grams.<br/>Gemmology Report available.<br/><b>£600-800</b></p> |
|---|--|



## Antiques & Interiors, 20th Aug, 2025 - 21st Aug, 2025

- |  |  |
|--|--|
| <p>72 An early to mid 20th century yellow and white metal three stone diamond ring, centred with one old cushion cut diamond, calculated to weigh 0.88ct, flanked by two old cushion cut diamonds, both estimated to weigh 0.46ct each, the shank stamped '18ct, PLAT', engraved with initials and date '1.2.40', size Q, gross weight 3.4 grams.<br/>Gemmology Report available.<br/><b>£400-600</b></p> <p>73 A yellow and white metal three stone diamond ring, the centre round brilliant cut diamond calculated to weigh 0.70ct, flanked by two further round brilliant cut diamonds, both estimated to weigh 0.36ct each, the shank stamped '18ct', size N, gross weight 4.4 grams.<br/>Gemmology Report available.<br/><b>£1,200-1,800</b></p> <p>74 A 9ct gold, sapphire and diamond cluster ring, size O1/2, gross weight 1.8 grams.<br/><b>£80-120</b></p> <p>75 An 18ct gold, sapphire and diamond cluster ring, size N1/2, gross weight 7.7 grams.<br/><b>£700-900</b></p> <p>76 A 9ct gold and cameo set dress ring, size N, gross weight 3.2 grams; together with a 9ct gold aquamarine coloured gem set cluster ring, size P, gross weight 4.3 grams.<br/><b>£120-180</b></p> <p>77 A yellow metal and opal single stone ring, stamped '9ct', size K, gross weight 4.7 grams.<br/><b>£70-150</b></p> <p>78 A cased set of three late 19th/ early 20th century white metal and paste set star brooches, the largest approximately 38.9mm diameter.<br/><b>£100-200</b></p> <p>79 A late 19th/ early 20th century white and yellow metal and rose cut diamond set cross pendant, 58.1mm long excluding bail x 43.8mm wide, gross weight 10.9 grams; together with a white and yellow metal rose cut diamond set oval brooch, 36.8mm wide x 23.7mm, gross weight 5.9 grams; both in blue velvet lined red leather case.<br/><b>£250-500</b></p> <p>80 A pair of white and yellow metal diamond set earrings, in velvet lined leather covered box for Mackay &amp; Chisholm, Edinburgh, gross weight 2.7 grams.<br/><b>£100-200</b></p> | <p>81 A pair of white metal mounted diamond ear studs, set with one round brilliant cut diamond, estimated to weigh 0.52ct, and the other set with round brilliant cut diamond, estimated to weigh 0.45ct, the screw fixtures inscribed '9ct gold', gross weight 1.1 grams.<br/>Gemmology Report available.<br/><b>£100-200</b></p> <p>82 A pair of Italian three colour yellow metal diamond chip set earrings, stamped '18k', 15.9mm long, gross weight 3.7 grams.<br/><b>£120-180</b></p> <p>83 A yellow metal and diamond set dress ring, size M, gross weight 2.6 grams; together with a pair of matching yellow and white metal diamond set earrings, of open oval form, gross weight 3.4 grams.<br/><b>£120-180</b></p> <p>84 A pair of late 19th/ early 20th century gold plated pendant drop earrings, approximately 72.5mm long, gross weight 14.8 grams.<br/><b>£40-80</b></p> <p>85 Two pairs of silver earrings, one pair of square pendant form; the other of demi lune form, gross weight 12.7 grams.<br/><b>£40-80</b></p> <p>86 A late 19th/ early 20th century yellow metal ball shaped pendant with filigree work detail, approximately 13.9mm diameter, 3.4 grams.<br/><b>£120-180</b></p> <p>87 A 9ct gold propelling pencil by Sampson Mordan, contained within 9ct gold sleeve, stamped 'SM&amp;Co', 54.8mm long in the closed position, suspending a gold plated fob with intaglio cut glass seal, gross weight 17.1 grams.<br/><b>£150-250</b></p> <p>88 A 9ct gold spinner fob suspended from chain and T-bar brooch, gross weight 24.3 grams.<br/><b>£200-400</b></p> <p>89 A 9ct gold mounted spinner fob, gross weight 14.3 grams.<br/><b>£70-150</b></p> <p>90 A 9ct gold heart shaped locket; a 9ct gold oval brooch; and a yellow metal mounted gold coin brooch, Costa Rica 1900 Dos Colones; gross weight 10.5 grams.<br/><b>£200-300</b></p> <p>91 A pair of 9ct gold rectangular cufflinks, 8.5 grams.<br/><b>£150-250</b></p> |
|--|--|



## Antiques & Interiors, 20th Aug, 2025 - 21st Aug, 2025

- |   |  |
|---|--|
| <p>92 A pair of 9ct gold and blue enamel oval cufflinks, with engine turned details, gross weight 7.5 grams.<br/><b>£150-250</b></p> <p>93 A pair of yellow metal oval cufflinks (tests as 18ct gold), 6.5 grams.<br/><b>£250-400</b></p> <p>94 Three pairs of assorted 9ct gold cufflinks; together with three various 9ct gold shirt studs, gross weight 19.5 grams.<br/><b>£400-600</b></p> <p>95 Two Danish sterling silver brooches, one modelled with a kneeling fawn after a design by Arno Malinowski, 33.3mm wide; the other modelled with a bird, 36.8mm wide; both stamped 'Sterling Denmark', gross weight 14.9 grams.<br/><b>£80-120</b></p> <p>96 Zandra Rhodes, a 9ct gold and aquamarine coloured gem set safety pin brooch, 36.5mm wide, gross weight 4.5 grams, in Zandra Rhodes box.<br/><b>£70-150</b></p> <p>97 Tiffany &amp; Co, a sterling silver necklace and matching bracelet, gross weight 23.6 grams.<br/><b>£40-80</b></p> <p>98 Four costume jewellery brooches, one in the form of a feather; one a double pansy spray; and two in the form of birds, by Butcher &amp; Wilson.<br/><b>£30-70</b></p> <p>99 A box of assorted costume jewellery.<br/><b>£50-100</b></p> <p>100 A jewellery box containing a large collection of assorted costume jewellery, necklaces, rings, etc.<br/><b>£50-100</b></p> <p>101 A silver necklace; a yellow metal interlocking oval brooch; two ladies evening bags.<br/><b>£30-70</b></p> <p>101A A box of assorted costume jewellery.<br/><b>£40-80</b></p> <p>101B A box of assorted costume jewellery to include assorted marcasite set jewellery; pearl necklaces; yellow metal hinged bangle; silver hinged bangle; yellow metal articulated panel bracelet; white metal necklace; bag of assorted ear studs.<br/><b>£40-80</b></p> <p>101C A vintage yellow metal and pearl double strand necklace, the clasp stamped '9ct'.<br/><b>£50-100</b></p> | <p>102 A box containing six pairs of assorted gold plated earrings.<br/><b>£40-80</b></p> <p>103 A collection of five assorted stone and semi-precious gem set pendants.<br/><b>£40-80</b></p> <p>104 A collection of assorted jewellery to include a yellow metal rectangular link bracelet, set with coloured semi-precious stones, (in two parts); a white metal necklace with links formed as open rose flowerheads; a Middle Eastern white metal square shaped pendant; and a silver mounted semi-precious gem set clasp.<br/><b>£40-80</b></p> <p>105 A brass and turquoise set purse canteen, with turquoise cabochon detail to both sides, 16cm wide.<br/><b>£20-50</b></p> <p>106 Three assorted costume jewellery brooches.<br/><b>£40-80</b></p> <p>107 A box of assorted costume jewellery.<br/><b>£40-80</b></p> <p>108 Three watches to include examples by Daniel Hechter; Iger; and one other; together with two yellow metal Hunter cased pocketwatches.<br/><b>£20-50</b></p> <p>109 A tray of assorted boxed jewellery comprising six boxed pairs of earrings; a boxed ring; a boxed ring and earring set; three boxed pendants.<br/><b>£100-200</b></p> <p>110 A box of assorted vintage glass marbles, to include opaque white and coloured examples.<br/><b>£40-80</b></p> <p>111 A mahogany Solitaire board and clear glass marbles; together with two boxes of assorted clear glass marbles.<br/><b>£40-80</b></p> <p>112 A London silver salver, engraved with Armorial crest, raised on three scroll feet, 25cm diameter, 17.9 troy ozs.<br/><b>£250-400</b></p> <p>113 A Sheffield silver salver on four scroll feet, 25cm diameter, 14.8 troy ozs.<br/><b>£250-400</b></p> <p>114 A London silver salver raised on four claw and ball feet, 35.5cm diameter, 44.4 troy ozs.<br/><b>£700-900</b></p> <p>115 A London silver salver raised on three shaped feet, 30.5cm diameter, 25.6 troy ozs.<br/><b>£500-700</b></p> |
|---|--|



## Antiques & Interiors, 20th Aug, 2025 - 21st Aug, 2025

- |   |   |
|---|---|
| <p>116 A Sheffield silver salver raised on three scroll feet, 31cm diameter, 27.2 troy ozs.<br/><b>£450-650</b></p> <p>117 A Birmingham silver salver with presentation inscription, raised on three scroll feet, 27cm diameter, 18.2 troy ozs.<br/><b>£300-500</b></p> <p>118 A London silver octagonal shaped bowl raised on four pierced feet, 27cm diameter x 7.5cm high, 17.8 troy ozs.<br/><b>£300-500</b></p> <p>119 A collection of silver flatware to include an Edinburgh silver fiddle pattern sauce ladle; a Norwegian silver jam spoon; together with remaining assorted silver spoons, gross weight 4.2 troy ozs.<br/><b>£50-100</b></p> <p>120 An Arts &amp; Crafts silver and enamel spoon, London 1913, makers mark of George Lawrence Connell, 15.5cm long, 1.1 troy ozs.<br/><b>£100-200</b></p> <p>121 A collection of silver flatware to include a set of six George III Edinburgh silver dessert spoons, 1810, makers mark of L.B for Lindsay Beech; together with three assorted London silver table spoons, 12.6 troy ozs.<br/><b>£200-300</b></p> <p>122 A Birmingham silver christening mug, 7cm high, 3.3 troy ozs.<br/><b>£50-100</b></p> <p>123 An Art Nouveau silver strut photograph frame, Birmingham 1904, makers mark of HM, overall size 20cm x 17cm, aperture size 12.5cm x 8.5cm.<br/><b>£50-100</b></p> <p>124 A Birmingham silver mounted cut glass decanter and stopper, 27cm high.<br/><b>£40-80</b></p> <p>125 A Birmingham silver twin-handled porringer, 10cm diameter x 6.5cm high, 7.8 troy ozs.<br/><b>£120-180</b></p> <p>126 A late 17th/ early 18th century Swedish silver and silver gilt beaker, of tapered cylindrical form, inscribed 'JB8MOD', 8.5cm high, 1.8 troy ozs.<br/><b>£100-200</b></p> <p>127 An Arts &amp; Crafts silver bowl, Sheffield 1908, makers mark of F.BS Ltd for Fenton Brothers Ltd, embossed with panels of Celtic knotwork, 11.5cm diameter x 5.5cm high, 4.2 troy ozs.<br/><b>£70-150</b></p> | <p>128 A pair of Antique London silver salts, both raised on three shaped supports, 6cm diameter x 4cm high, 3.3 troy ozs.<br/><b>£50-100</b></p> <p>129 A collection of seven assorted silver and sterling silver brooches, mainly of a Scottish theme; together with a white metal Celtic style napkin ring.<br/><b>£50-100</b></p> <p>130 A collection of silver teaspoons to include six London silver Apostle topped teaspoons; five Sheffield silver teaspoons; and six assorted fiddle pattern teaspoons, gross weight 6.9 troy ozs.<br/><b>£100-200</b></p> <p>131 Eight Antique London silver dessert forks, Old English pattern, makers mark of BC&amp;N, engraved with initials and Armorial crest, 11.1 troy ozs.<br/><b>£150-250</b></p> <p>132 A set of six London silver tablespoons, fiddle pattern, engraved with initial 'F', 13 troy ozs.<br/><b>£200-300</b></p> <p>133 A London silver and boars tusk desk stand, set with two cut glass detachable inkwells, inscribed 'Tunis 1879', 29cm wide, gross weight 31.3 troy ozs.<br/><b>£200-400</b></p> <p>134 A German sterling silver mounted glass decanter and stopper, 33cm high.<br/><b>£100-200</b></p> <p>135 A London silver hot water pot, engraved with Armorial crest, 19.5cm high, gross weight 14.9 troy ozs.<br/><b>£200-300</b></p> <p>136 An Indian/ Burmese silver double sided measuring cup of tapered cylindrical form, with single and double measure cups, embossed with panels of figures, 8.5cm high, 2.5 troy ozs.<br/><b>£30-70</b></p> <p>137 A Scottish Provincial silver sauce ladle, Aberdeen, makers mark of JW, fiddle pattern, engraved with initial 'M', 15.5cm long.<br/><b>£30-70</b></p> <p>138 An Edinburgh silver soup ladle, fiddle pattern, engraved with initial 'B', makers mark of JH, 6.3 troy ozs.<br/><b>£70-150</b></p> <p>139 A late 17th/ early 18th century Scandinavian, probably Norwegian, silver spoon, the reverse of the bowl inscribed 'HB', 17.5cm long.<br/><b>£70-150</b></p> |
|---|---|



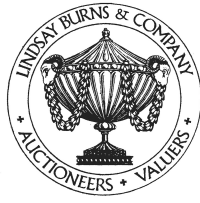
## Antiques & Interiors, 20th Aug, 2025 - 21st Aug, 2025

- |  |  |
|--|--|
| <p>140 A London silver toddy ladle with baleen twist handle, 38.5cm long.<br/><b>£40-80</b></p> <p>141 A modern Birmingham silver photograph frame, embossed with fruiting vine and scrolls, with strut support, overall size 24.5cm high x 18.5cm wide, oval aperture size 13cm x 9.5cm.<br/><b>£50-100</b></p> <p>142 A cased set of twelve Glasgow silver teaspoons and tongs, makers mark of Sorley, 7.2 troy ozs.<br/><b>£100-200</b></p> <p>143 A Glasgow silver letter opener in the form of a Claymore sword; together with a white metal combination propelling pencil and ink pen; another white metal propelling pencil; a silver ink pen; and a Sampson Morden &amp; Co propelling pencil section.<br/><b>£50-100</b></p> <p>144 A Birmingham silver cigar case, 13cm x 8cm, 4.8 troy ozs.<br/><b>£70-150</b></p> <p>145 A Birmingham silver cigarette case, 2.2 troy ozs.<br/><b>£30-70</b></p> <p>146 A Sheffield silver and mother-of-pearl pocket knife, 8.2cm long.<br/><b>£30-70</b></p> <p>147 A collection of silver to include two assorted silver napkin rings; a hinged silver bangle; and an Edinburgh silver ingot shaped pendant suspended on a silver chain, gross weight 2.5 troy ozs.<br/><b>£40-80</b></p> <p>148 A pair of Norwegian sterling silver cornucopia shaped salt and pepper pots; a pair of Continental silver mounted glass swan shaped salts; together with another similar white metal mounted swan shaped salt; and three Norwegian white metal long boat shaped salts.<br/><b>£50-100</b></p> <p>149 A cased set of silver 'Stamps of Royalty, Limited Edition, set no.2060', with certificate of authenticity and limitation.<br/><b>£150-300</b></p> <p>150 A cased Sheffield silver fork and spoon.<br/><b>£20-50</b></p> <p>151 A cased set of four Sheffield silver pickle forks; together with a cased pair of London silver berry spoons.<br/><b>£50-100</b></p> | <p>152 Two white metal mounted clear glass salts; together with a pair of quatrefoil shaped clear glass salts and four silver plated salt spoons.<br/><b>£10-30</b></p> <p>153 A Birmingham silver three piece dressing table set comprising mirror and two brushes; together with another pair of associated Birmingham silver backed gentlemen's hairbrushes.<br/><b>£50-100</b></p> <p>154 A white metal wine bottle/ champagne bottle holder, makers mark of H.R; together with a silver plated shell shaped sifting spoon.<br/><b>£30-70</b></p> <p>155 A collection of silver to include a cigarette case; two napkin rings; teaspoon; and a cup holder, gross weight 7 troy ozs.<br/><b>£100-200</b></p> <p>156 A collection of silver ware to include a cased pair of silver napkin rings; a silver photograph frame with strut support; two silver candle stands; three silver salts, two with clear glass liners.<br/><b>£50-100</b></p> <p>157 A cased set of six Sheffield silver Art Deco style coffee spoons.<br/><b>£20-50</b></p> <p>158 A cased set of twelve electroplated coffee spoons with bean terminals.<br/><b>£20-50</b></p> <p>159 A cased set of twelve silver teaspoons, various hallmarks of the United Kingdom.<br/><b>£40-80</b></p> <p>160 A collection of assorted silver ware to include three various napkin rings; two pepper pots; two oval salts with blue glass liners; and assorted spoons.<br/><b>£70-150</b></p> <p>161 A Birmingham silver capstan inkwell, 14.5cm diameter.<br/><b>£40-80</b></p> <p>162 A collection of assorted silver flatware, 8.3 troy ozs.<br/><b>£120-180</b></p> <p>163 Two silver bottle stands, one hallmarked London with straight sides, 12.5cm diameter; the other hallmarked Birmingham with convex sides, 14cm diameter.<br/><b>£50-100</b></p> <p>164 A Sheffield silver pickle fork in fitted case; together with a Birmingham silver bon bon dish; gross weight 3.9 troy ozs.<br/><b>£50-100</b></p> |
|--|--|



## Antiques & Interiors, 20th Aug, 2025 - 21st Aug, 2025

- 165 A silver four piece tea set, comprising a London silver tea pot; together with a London silver hot water jug; twin-handled sugar bowl and cream jug, gross weight 55.7 troy ozs. Ivory Act 2018 (2022) compliant with non-transferable APHA registration, reference 79D5PPFG.  
**£800-1,200**
- 166 A late 19th/ early 20th century white metal Indian/ Burmese composite three piece bachelors coffee set, comprising coffee pot and two cream jugs, 22.1 troy ozs.  
**£200-400**
- 167 A silver pedestal bowl, 12.5cm diameter, loaded.  
**£30-70**
- 168 A Birmingham silver sauce boat, 3.5 troy ozs.  
**£50-100**
- 169 A London silver twin-handled sugar bowl with gilded interior and bright cut decoration, 8.4 troy ozs.  
**£120-180**
- 170 A pair of Indian/ Burmese white metal flower vases, with frilled rims and embossed figural decoration, 21cm high, 17.2 troy ozs.  
**£150-300**
- 171 A George III Irish silver tea pot, Dublin 1813, makers mark of I.S for James Scott, with bright cut decoration and engraved with initials, raised on four bun feet, gross weight 25.3 troy ozs; together with a London silver cream jug, with bright cut decoration on four ball feet, 4 troy ozs.  
**£500-700**
- 172 A pair of Birmingham silver candlesticks, 18.5cm high, loaded.  
**£40-80**
- 173 A Sheffield silver cream jug, 3.6 troy ozs.  
**£40-80**
- 174 A George III silver seven bar toast rack, London 1801, makers mark of HS, probably that of Solomon Hougham, oval shaped, raised on four shaped feet, 16.5cm wide x 13.5cm high, 4.7 troy ozs.  
**£70-150**
- 175 A Bank of England £5 note, London 29th August 1929, no.257H 84766.  
**£100-200**
- 176 A North of Scotland Bank Limited £5 note, Aberdeen 1st July 1947, no.DE150581.  
**£40-80**
- 177 A Bank of Scotland £20 note, Edinburgh 2nd October 1963, no.1/J 4519.  
**£70-120**
- 178 A Bank of Scotland £5 note, Edinburgh 30th June 1930, no.1/L 8376.  
**£40-80**
- 178A A collection of mainly Scottish £1 banknotes to include, North of Scotland Bank Limited £1 note, Aberdeen 1st July 1945, No. D708957, The Royal Bank of Scotland £1 note, 2nd November 1964, No. CB289143, The National Bank of Scotland £1 note, Edinburgh 1st October 1958, No. B/Y 847-93, The British Linen Bank £1 note, Stirling 29th February 1968, No. V/4 567988, two Bank of Scotland £1 notes, Edinburgh 3rd March 1967, No. A/V 0591483 and B/A 0627884, Bank of Scotland £1 note, Edinburgh 17th July 1968, No. A/2 0573408, The Royal Bank of Scotland £1 note, Edinburgh 19th March 1969, No. A/36 215803, four assorted National Commercial Bank of Scotland Limited £1 notes, 1961, 1963, 1964, 1968, four Clydesdale & North of Scotland Bank Limited £1 notes, 1961, 1962 and two 1963, together with two Bank of England £1 notes commemorating Sir Isaac Newton and an Isle of Man Bank Limited £1 note, Douglas 17th March 1958, No. J/4 1797, (19)  
**£70-150**
- 178B A collection of eight assorted Scottish banknotes to include, National Commercial Bank of Scotland Limited £20 note, Edinburgh 16th September 1959, No. A043771, The Royal Bank of Scotland £10 note, Edinburgh 19th March 1969, No. A/1 280990, National Commercial Bank of Scotland Limited £5 note, Edinburgh 1st August 1966, No. N0796301, two Bank of Scotland £5 notes, Edinburgh 25th September 1961, No. 14/H 9431 and Edinburgh 19th September 1961, No. 12/D 3395 and three Clydesdale Bank Limited £5 notes, Glasgow 1962, 1963 & 1969, (8)  
**£70-150**
- 179 A vintage Omega Automatic Seamaster gold plated bracelet watch, the back of the case inscribed 'From Erni to Tommy, Xmas 1962', case diameter including crown 35.5mm, complete with box and papers dated 21.12.62.  
**£100-200**
- 180 A ladies Must De Cartier silver gilt Tank watch, quartz movement, back of the case no.64484 505701, case width including crown 23.4mm, complete with box and papers dated 08.11.91.  
**£150-300**



## Antiques & Interiors, 20th Aug, 2025 - 21st Aug, 2025

- 181 A 9ct gold cased ladies watch, lacking strap, the circular dial with Arabic numerals, case diameter including crown 24.4mm, gross weight 10 grams.  
**£50-100**
- 182 A 9ct gold ladies Swiss made wristwatch, the movement inscribed 'Visible 51589', with gold plated bracelet strap, case diameter including crown 29.2mm, gross weight 13.8 grams; together with a 9ct gold cased ladies Girard Perregaux wristwatch, with gold plated bracelet strap, the reverse engraved with initials and no.80590031, case diameter 19.1mm, gross weight 12.2 grams.  
**£100-200**
- 183 A 9ct gold ladies Marvin bracelet wristwatch, the circular dial with baton numerals, with 9ct gold strap, case width including crown 16.1mm, gross weight 23.6 grams.  
**£500-700**
- 183A A ladies 18ct gold cased Wega wristwatch, with circular baton numeral dial, the back of the case stamped '18k 750', on a later 9ct gold bracelet strap, gross weight 15.5 grams.  
**£300-500**
- 184 A 9ct gold ladies wristwatch, the octagonal case enclosing a circular dial with Arabic numerals, on gold plated bracelet strap, gross weight 12.1 grams; together with a vintage ladies yellow metal cased Favre-Leuba Geneve wristwatch with circular dial bearing Arabic numerals, on a gold plated bracelet strap, gross weight 11 grams.  
**£70-150**
- 185 A ladies gold plated Accurist Quartz wristwatch, with black dial bearing Roman and baton numerals, with bracelet strap, the case back inscribed 'AC Base Metal Top Stainless Steel Back 706000 Japan'.  
**£30-70**
- 186 A vintage ladies 9ct gold Record De Luxe Swiss made wristwatch, with circular dial bearing Arabic and baton numerals, with 9ct gold bracelet strap, case diameter including crown 18.4mm, gross weight 15.3 grams.  
**£200-400**
- 187 A 9ct gold ladies Marvin bracelet wristwatch, the circular dial with baton numerals, on 9ct gold strap, gross weight 38.4 grams.  
**£700-900**
- 187A An early 20th century Art Deco white metal cocktail watch, the square dial with Arabic numerals, the back of the case stamped '14k gold filled' and engraved with initials 'SSD', with Elgin USA movement 33583112.  
**£40-80**
- 188 A vintage ladies 9ct gold Le Cheminant bracelet wristwatch, the rectangular dial with baton numerals on 9ct gold bracelet strap, gross weight 30 grams.  
**£600-800**
- 189 A vintage ladies 18ct gold Corum wristwatch, the square dial with black dot numerals, on later black coloured strap, gross weight 17.5 grams.  
**£150-300**
- 189A A yellow metal open-faced pocketwatch, with Roman numeral dial, stamped '18k', case diameter 36.6mm, gross weight 34.1 grams; in Camerer, Kuss & Co fitted box.  
**£250-500**
- 189B A yellow metal Albert chain, in two parts, the loop stamped '10c', 16.8 grams.  
**£300-500**
- 190 A vintage gold plated Hunter cased pocketwatch, with black and white Roman numeral dial and subsidiary seconds dial, the dust cover bearing inscription, dated 1925, the cover engraved with initials, case diameter 50.6mm; together with a gold plated Elgin open-faced pocketwatch, with Roman numeral dial, case diameter 35.2mm.  
**£40-80**
- 191 A Birmingham silver Hunter cased pocketwatch, W. Campbell, London, with black and white Roman numeral dial and subsidiary seconds dial, suspended on silver Albert chain with T-bar suspension, suspending a further Birmingham silver shield shaped medallion.  
**£50-100**
- 192 A London silver pair cased pocketwatch, JNO. Hood, Cupar & Dunfermline, no.14451, with black and white Roman numerals and subsidiary seconds dial bearing Arabic numerals, case diameter 44.5mm, the outer case with Birmingham silver hallmarks, overall diameter 54.8mm.  
**£50-100**
- 193 A 9ct gold open-faced pocketwatch, the black and white dial with Roman numerals and subsidiary seconds bearing Arabic numerals, case diameter 49.4mm, gross weight 84.9 grams.  
**£250-500**



## Antiques & Interiors, 20th Aug, 2025 - 21st Aug, 2025

- |  |  |
|--|--|
| <p>194 A Birmingham silver cased chronometer pocketwatch, W. Ehrhardt, London, Chronometer Makers to The Admiralty, the black and white Roman numeral dial with subsidiary seconds dial, the movement no.760160, case diameter 53.6mm.<br/><b>£40-80</b></p> <p>195 A Chester silver cased open-faced pocketwatch, Russell &amp; Son, London, no.90614, the black and white dial with Roman numerals and subsidiary seconds dial, case diameter 50.8mm.<br/><b>£40-80</b></p> <p>196 A pair of Sheffield silver Corinthian column candlesticks with detachable drip pans, 15.5cm high, loaded.<br/><b>£100-200</b></p> <p>197 A London silver cigarette box with engine turned details, engraved circular initial panel, 14cm wide.<br/><b>£50-100</b></p> <p>198 A Birmingham silver cigarette box, 12.5cm wide.<br/><b>£50-100</b></p> <p>199 A Sheffield silver inkwell, with hinged cover and detachable clear glass ink pot, 11.5cm square.<br/><b>£50-100</b></p> <p>200 Seaforth Highlanders Interest - A London silver cigarette box, with presentation inscription 'To Major S J Swinton Lee', 17cm wide.<br/><b>£70-150</b></p> <p>201 A Birmingham silver cigarette box with engine turned details and vacant rectangular initial panel.<br/><b>£70-150</b></p> <p>202 An Irish silver twin-handled sugar bowl, Dublin 1813, makers mark of RS for Richard Sawyer, 20cm wide (handle to handle); together with a pair of Irish silver sugar tongs with shell shaped bowls, makers mark of BT for Benjamin Taitt; gross weight 10.4 troy ozs.<br/><b>£150-250</b></p> <p>203 Hamilton &amp; Inches of Edinburgh, an oval silver box and hinged cover, with chaste borders of Celtic knotwork, 19cm wide x 9.5cm high, 23.2 troy ozs.<br/><b>£400-600</b></p> <p>204 A pair of Sheffield silver candlesticks, 17.5cm high, loaded.<br/><b>£40-80</b></p> <p>204A A 9ct gold necklace, 21.6 grams.<br/><b>£400-600</b></p> | <p>204B A 9ct gold necklace, 33.1 grams.<br/><b>£700-1,000</b></p> <p>204C A yellow metal necklace, stamped '375', suspending a 9ct gold and pearl set pendant, gross weight 8.7 grams.<br/><b>£150-250</b></p> <p>204D A 9ct gold necklace, 12.8 grams.<br/><b>£250-400</b></p> <p>204E A vintage white and yellow metal, garnet and paste set cluster ring, stamped '9ct', size P, gross weight 2.2 grams.<br/><b>£40-80</b></p> <p>204F An 18ct gold and garnet single stone ring, size O, gross weight 2.3 grams.<br/><b>£70-150</b></p> <p>204G A group of 9ct gold and yellow metal garnet set jewellery to include a 9ct gold single stone bar brooch; and a 9ct gold necklace suspending an oval garnet pendant; gross weight for the two 4.2 grams; together with two pairs of yellow metal and garnet set ear studs, gross weight 3.4 grams.<br/><b>£70-150</b></p> <p>204H A 9ct gold, garnet and paste set fern leaf brooch, gross weight 5.3 grams; a 9ct gold, garnet and pearl set flower brooch, 4.7 grams; and a yellow metal and pearl set flower shaped brooch, gross weight 4 grams.<br/><b>£250-400</b></p> <p>204I A 9ct gold bracelet, in two parts, suspending a 9ct gold heart shaped lock, 10.6 grams.<br/><b>£200-300</b></p> <p>204J A group of three 9ct gold and yellow metal bar brooches comprising a 9ct gold and three stone pearl bar brooch, 1.9 grams; two yellow metal bar brooches, each centred with a blue aquamarine coloured circular faceted stone, both stamped '9ct', gross weight 4.3 grams.<br/><b>£70-150</b></p> <p>204K A box of assorted crowns and coins.<br/><b>£20-50</b></p> <p>205 An Arts &amp; Crafts Newlyn copper pen tray, with embossed decoration of three fish, stamped marks, 26cm x 7cm.<br/><b>£70-150</b></p> <p>206 A group of Black Forest carved wooden ware to include a bottle stopper, topped with a bear, 12.5cm long; a paper knife/ letter opener, topped with a bear, 18.5cm long; and a paper knife/ letter opener, topped with a bear climbing a tree, 26cm long.<br/><b>£40-80</b></p> |
|--|--|



## Antiques & Interiors, 20th Aug, 2025 - 21st Aug, 2025

- |  |  |
|--|--|
| <p>207 Three pieces of Treen to include a thread box in the form of a cotton reel, 4.5cm x 4cm; a circular box and detachable cover with circular bloodstone insert, 5.5cm diameter; and a wood and brass wax seal stamp, 8.5cm long.<br/><b>£40-80</b></p> <p>208 A group of three Antique lead Musket balls, the bag bearing paper label inscribed '1746 Culloden Medallion', approximately 17.3mm, 16.2mm and 13.4mm.<br/><b>£20-50</b></p> <p>209 A Black Forest carved wood sewing companion, carved with a bear standing with one front paw raised, enclosing a pin cushion, thread holder and thimble holder, complete with cotton thread and silver plated thimble, 14cm wide x 9cm high.<br/><b>£70-150</b></p> <p>210 A Black Forest carved wood desk stand, carved with a bear holding one front paw to head, complete with beehive shaped inkwell, opening to a clear glass ink pot, 16.5cm wide x 11cm high; together with a corresponding ink pen with carved bear top, 20cm long.<br/><b>£70-150</b></p> <p>211 No Lot.<br/><b>£1-2</b></p> <p>212 No Lot.<br/><b>£1-2</b></p> <p>213 Great War Interest - A field compass, marked '1918 E. Coehn, Geneve, Suisse, no.115834', Verner's Pattern V111.<br/><b>£20-50</b></p> <p>214 A collection of assorted late 19th century and later coinage to include a Victorian crown dated 1894; various other crowns; a Royal Wedding HRH The Prince of Wales to Lady Diana Spencer commemorative crown; and other modern coinage.<br/><b>£30-70</b></p> <p>215 A collection of assorted vintage coinage, mainly Continental, together with two Federal Republic of Nigeria banknotes to include £1 and five schillings.<br/><b>£20-50</b></p> <p>216 Battle of Culloden/ Jacobite Interest - A George II, Duke of Cumberland, Battle of Culloden Rebels of Repulsed silver medal, 1745, 32.8mm diameter; and two other Jacobite interest medals.<br/><b>£50-100</b></p> | <p>217 Two Antique cloth and studded coin purses; together with a collection of assorted various vintage coins.<br/><b>£40-80</b></p> <p>218 A box containing a collection of assorted crowns.<br/><b>£20-50</b></p> <p>219 A collection of assorted silver coins to include a 2000 silver \$1; together with other assorted silver coins.<br/><b>£20-50</b></p> <p>220 A pair of bronze rectangular plaques, decorated in relief with battle scenes of knights on horseback and foot, 10.5cm x 8cm, no.537 and 538.<br/><b>£40-80</b></p> <p>221 A box of assorted vintage fountain pens, pen nibs, etc, to include two boxed Waverley Cameron fountain pens, both with 14ct nibs; a boxed Tia Maria fountain pen with iridium nib; various other metal boxes of pen nibs by Waverley and Silverwing; envelopes of pen nibs by Waverley, etc.<br/><b>£40-80</b></p> <p>222 A boxed Hardy fishing reel, Angel II, no.11/12.<br/><b>£40-80</b></p> <p>223 A House of Hardy Ultralite Disc LA10/11 fishing reel, in Neoprene Hardy case.<br/><b>£40-80</b></p> <p>224 A House of Hardy Ultralite Disc LA94/10 fishing reel, in burgundy coloured Neoprene case; together with a spare spool in House of Hardy canvas bag.<br/><b>£40-80</b></p> <p>225 An Abu Garcia Ambassadeur 523 fishing reel, in original box.<br/><b>£40-80</b></p> <p>226 An Antique wood and brass fishing reel, 11.5cm diameter.<br/><b>£30-70</b></p> <p>227 A cold-painted bronze model of a grouse, 8cm high.<br/><b>£70-150</b></p> <p>228 A collection of assorted Onyx, banded agate and stone specimens.<br/><b>£30-70</b></p> |
|--|--|



## Antiques & Interiors, 20th Aug, 2025 - 21st Aug, 2025

- 229 Richard Rohac, four Austrian bronze figures one modelled as an African dancer, 18cm high; two modelled as African hunters holding spears, 16cm high and 11cm high; one modelled as an Asian male water carrier figure, 12cm high; together with another similar styled figure of an Asian male carrying a barrel, 12cm high.  
**£100-200**
- 230 Two cold-painted bronze animals to include a Cock Pheasant, 10cm high; and a Grouse, 9cm high.  
**£70-150**
- 230A An early 20th century cold-painted bronze model of an African Grey Parrot, 8cm high.  
**£50-100**
- 230B Two early 20th century cold-painted bronze figures of animals, one modelled as a Fox with a duck in its jaws, 6.5cm high; the other modelled as an Otter with a fish in its jaws, 2.5cm high x 9.5cm long.  
**£50-100**
- 231 A Christofle silver plated Talisman cylindrical box and cover, the cover with black lacquered cylindrical rod shaped handle, stamped marks, 13cm high x 10cm diameter.  
**£50-100**
- 231A A Christofle silver plated Elephant and Monkey toothpick holder, stamped marks, 10cm high.  
**£50-100**
- 231B A Persian white metal rectangular snuff box, the hinged rectangular cover and underside with engraved decoration of figures, the sides decorated with flowers, birds and foliage, 8.5cm wide x 2.5cm high x 3.5cm deep.  
**£40-80**
- 231C A large Sheffield silver twin-handled quaich, engraved with presentation inscription, 34cm wide x 8cm high, 26 troy ozs, on an ebonised plinth.  
**£400-600**
- 231D An Edinburgh silver facsimile Traparain triangular shaped salt, inscribed on the underside 'Traparain Treasure 1919, authorised reproduction', Edinburgh hallmarks, Brook & Son, George Street, Edinburgh, 11.5cm x 4.8cm, 5 troy ozs.  
**£70-150**
- 231E A Continental Antique silver twin-handled octagonal shaped bowl, the sides engraved with scrolls and fruit, the pierced handles centred with a figural mask, raised on octagonal shaped domed foot, stamped marks AN over 52, 20.5cm wide x 8.3cm high, 9.5 troy ozs.  
**£120-180**
- 231F A Chester solid silver hip flask, engraved with initials JMA, 14cm high, 7.4 troy ozs.  
**£100-200**
- 231G Two Birmingham silver concave cigarette cases, 7.5 troy ozs.  
**£120-180**
- 232 Louis Vuitton Fashion Jewellery, a boxed gold plated resin and crystal ball ring, size P, with original paperwork, ribbon and pouch; together with a pair of matching pendant earrings.  
**£70-150**
- 232A A gentlemen's 9ct gold Rotary Elite wristwatch, the champagne coloured dial with baton numerals and date aperture, with black leather strap, gross weight 30.4 grams; together with original box and papers.  
**£150-300**
- 232B Two 9ct gold necklaces, 6.8 grams.  
**£120-180**
- 232C A 9ct gold necklace, 5.9 grams.  
**£100-200**
- 232D A yellow metal necklace stamped '9c', 7.4 grams.  
**£150-250**
- 232E A 9ct gold Albert chain with T-bar suspension and yellow metal shield shaped medallion, gross weight 38 grams.  
**£800-1,200**
- 232F A 9ct gold Albert chain with T-bar suspension, 40.9 grams.  
**£800-1,200**
- 232G A 9ct gold necklace, 5.4 grams.  
**£100-200**
- 233 A 9ct gold Charles Rennie Mackintosh style ring, size N, 2.1 grams.  
**£40-80**
- 233A A yellow metal and five stone gem set dress ring, stamped '583', size L, gross weight 3.1 grams.  
**£70-150**
- 233B Neil Lane, a white metal and diamond set cluster ring, size H, inscribed 'Neil Lane 14k.53', gross weight 3.5 grams.  
**£250-500**



## Antiques & Interiors, 20th Aug, 2025 - 21st Aug, 2025

- 233C A yellow and white metal diamond set five row ring, stamped '18k', approximately size O, gross weight 17.3 grams.  
**£700-900**
- 233D Three various 18ct gold rings to include a signet ring set with shield shaped bloodstone panel, left vacant, size O, 6 grams; a wedding ring, size L, 3.3 grams; and a gem set ring, lacking two stones, size S, gross weight 2.6 grams.  
**£300-500**
- 234 An early 20th century 9ct gold Dux medal, Kelvinside Academy 1918, modern side inscribed '6th Upper Class', on blue ribbon with two yellow metal bars, gross weight 29.1 grams, in fitted case.  
**£500-700**
- 234A Great War and Masonic Interest - A pair of WWI medals inscribed to 'Lieut. D. T. Mc Corkindale'; a London silver gilt and blue enamel Lodge 264 1791 Masonic medal; and silver gilt and blue enamel Percy Lodge 198 1906 Masonic medal, presented by 'The Unanimous Vote of The Brethren of The Percy Lodge No.198 to W. Bro. R. Ballantyne PM in recognition of his services as a W.M. during the year 1906'.  
**£100-200**
- 234B A silver and paste set tennis type bracelet; together with a silver semi-precious gem set pendant.  
**£40-80**
- 235 A yellow metal and five stone pearl set brooch, stamped 'k14', gross weight 10 grams.  
**£200-300**
- 235A A group of five assorted yellow and white metal rings (one cut), gross weight 12.6 grams.  
**£70-150**
- 235B Charles Horner, a Chester silver and enamel pendant, 27.2mm wide; together with a Norne silver and enamel brooch in the form of a Viking longboat, 24.6mm wide; gross weight 4.9 grams.  
**£40-80**
- 235C A yellow metal mounted aquamarine coloured oval faceted pendant, stamped '18k', gross weight 4.5 grams, the stone 17.6mm long.  
**£50-100**
- 235D A 9ct gold oval locket, 4.3 grams; together with a yellow metal and three stone garnet ring; and three odd earrings.  
**£70-150**
- 235E A yellow metal, amethyst and pearl set oval brooch, stamped '9ct', 23.2mm wide, gross weight 4.5 grams.  
**£70-150**
- 235F A 9ct gold wedding ring, size S1/2, 1.7 grams; together with a 9ct gold rectangular shaped pendant, 3.4 grams.  
**£100-200**
- 235G A yellow metal bangle, stamped '9ct', 85.7mm wide, 8.1 grams; together with a yellow metal brooch, 44.3mm wide, with later white metal pin, gross weight 4.9 grams.  
**£200-300**
- 235H Three various 9ct gold bracelets, 10 grams.  
**£200-300**
- 235I A yellow and white metal charm bracelet by Vaschieri, stamped '750', the white metal bracelet suspending six assorted yellow metal charms, gross weight 24.3 grams.  
**£1,000-1,500**
- 236 A Victorian gold sovereign dated 1884, in later 9ct gold pendant mount, suspended on a yellow metal necklace stamped '9ct', gross weight 22.6 grams.  
**£700-1,000**
- 237 A Victorian gold sovereign dated 1879.  
**£400-600**
- 238 A George V gold half sovereign dated 1913.  
**£200-300**
- 239 A George V gold sovereign dated 1912.  
**£400-600**
- 240 An Edward VII gold sovereign dated 1910.  
**£400-600**
- 241 A George V gold sovereign dated 1911.  
**£400-600**
- 242 A George V gold sovereign dated 1912.  
**£400-600**
- 243 A Victorian gold half sovereign dated 1900.  
**£200-300**
- 244 A French Marie Antoinette Reine De France gold coin, in later 9ct gold pendant mount, suspended on a yellow metal necklace, gross weight 17.5 grams.  
**£300-600**
- 245 An Edward VII gold half sovereign dated 1910.  
**£200-300**
- 246 A pair of gold half sovereigns, later mounted as earrings, one dated 1908; the other 1913; gross weight 9.2 grams.  
**£400-600**



## Antiques & Interiors, 20th Aug, 2025 - 21st Aug, 2025

- |   |   |
|---|---|
| <p>247 A yellow metal gatelink bracelet with heart shaped lock, the bracelet stamped '9c'; the lock similarly stamped '9c', gross weight 16.2 grams.<br/><b>£350-550</b></p> <p>248 A 9ct gold vesta holder, stamped 'Asprey, London', 6cm x 4.5cm, 26.4 grams.<br/><b>£500-800</b></p> <p>248A A late Victorian diamond set dress tie pin in unmarked bloomed gold mount; together with a gold tie pin with diamond set initials 'RH', in fitted cases.<br/><b>£80-120</b></p> <p>248B A late Victorian gold 'arrow' brooch, set with rose cut diamonds and a pearl, in fitted case.<br/><b>£150-250</b></p> <p>248C A gold propelling pencil, (sleeve &amp; top) stamped 'WAHL-EVERSHARP, 9k solid gold, made in Chicago U.S.A., gross weighable 11.2 grams.<br/><b>£150-250</b></p> <p>248D A 9ct gold engine turned pen knife, with steel blades, by Deakin &amp; Francis, Birmingham, 1920, gross weight 14.5 grams.<br/><b>£50-100</b></p> <p>248E A 9ct gold Art Deco engine turned cigar cutter, with steel blades, by Ramsden &amp; Roed, circa 1920, gross weight 17.5 grams.<br/><b>£80-120</b></p> <p>248F A Victorian mourning brooch, set with three diamonds in a navette shaped black onyx mount with unmarked gold and white metal border, in fitted case.<br/><b>£100-150</b></p> <p>248G An Edwardian 9ct gold mounted citrine swivel fob; and another similar swivel fob; both stamped '9ct'.<br/><b>£100-200</b></p> <p>248H A one pound note charm in 9ct gold glazed box mount; and a 12k gold filled circular brooch set with a small diamond and two rubies, with monogram 'FW'.<br/><b>£50-100</b></p> <p>248I A modern 18ct gold circular pendant, set with a central cabochon ruby and eight small diamonds, with a matt textured surface, by Mappin &amp; Webb, hallmarked London 1991, gross weight 5.9 grams.<br/><b>£200-300</b></p> <p>248J A clear glass scarab beetle pendant decorated with hieroglyphics, in unmarked yellow gold mount.<br/><b>£50-80</b></p> | <p>248K An Art Deco diamond bar brooch, of openwork geometric design, in unmarked white metal mount.<br/><b>£100-200</b></p> <p>248L An 18ct gold and enamel dress stud, engraved 1920, stamped '18ct', 3.3 grams.<br/><b>£100-150</b></p> <p>248M A diamond single stone bar brooch, in upright claw setting, the mount stamped '18CT'.<br/><b>£150-250</b></p> <p>249 A 9ct gold gatelink bracelet with 9ct gold heart shaped lock, 6.6 grams.<br/><b>£120-180</b></p> <p>250 A vintage yellow metal bracelet stamped '9c', suspending 9ct gold heart shaped lock and a 9ct gold key shaped charm, gross weight 10.7 grams.<br/><b>£200-300</b></p> <p>251 A yellow metal oval link chain, tests as 18ct gold, approximately 38cm long, approximately 44 grams, suspending a further yellow metal oval link and T-bar suspension, tests as 9ct gold, approximately 4.5cm long; gross weight 50.6 grams.<br/><b>£1,800-2,000</b></p> <p>252 A group of 9ct gold to include a shield shaped medallion; assorted necklace parts, gross weight 10.8 grams.<br/><b>£200-300</b></p> <p>253 A yellow metal bracelet stamped 9ct, 4.7 grams.<br/><b>£70-150</b></p> <p>254 A late 19th/ early 20th century yellow metal necklace, in two parts, tests as 14ct gold, 24.5 grams.<br/><b>£800-1,200</b></p> <p>255 A yellow metal hinged bracelet of convex form, set with five rows of ball shaped motifs on a lattice ground, the clasp stamped '750', overall 74mm wide x 31mm thick, 60.5 grams.<br/><b>£3,000-5,000</b></p> <p>256 A yellow metal seven panel bracelet, each hexagonal shaped panel centred with a pierced rectangular filigree work section of scrolls, tests as 18ct gold, 44 grams.<br/><b>£1,800-2,500</b></p> <p>257 A 9ct gold Charles Rennie Mackintosh style bracelet, 9.2 grams.<br/><b>£200-300</b></p> |
|---|---|



## Antiques & Interiors, 20th Aug, 2025 - 21st Aug, 2025

- 257A A gold ring, set with a single diamond, in upright tapering reeded claw setting, in unmarked gold mount, size Q, gross weight 4.4 grams.  
**£100-150**
- 257B A 9ct gold large ring, set with a single diamond in reeded raised claw setting, size R1/2, gross weight 7.7 grams.  
**£150-250**
- 257C A 14k gold gents dress ring, set with five diamonds in richly textured gold mount, stamped '14k', size R, gross weight 9 grams.  
**£250-350**
- 257D A 14k gold ring set with a central sapphire and four diamonds, in openwork frame mount, stamped '585', size L, gross weight 4.5 grams.  
**£100-200**
- 257E CHOPARD 'Ice Cube' 14ct gold ring of heavy gauge reeded pattern, stamped 'Chopard 585', size S, gross weight 6.5 grams.  
**£180-250**
- 257F A 14k gold large ring, set with five diamonds in a square mount, stamped '14k', size R, gross weight 5.5 grams.  
**£120-180**
- 257G An 18ct gold ring, set with a single diamond, the tapering band with pierced mount, stamped '18 CT' and 'PLAT.', size L, gross weight 9.5 grams.  
**£300-500**
- 257H A gents gold and diamond cluster dress ring, set with seven diamonds in tapering band with textured shoulders, in unmarked gold mount, size T, gross weight 10.2 grams.  
**£200-300**
- 257I A 9ct gold dress ring, set with a rectangular cut diamond in gold mount with textured shoulders, maker's mark AH, Edinburgh hallmarks, size R1/2, gross weight 5.4 grams.  
**£120-180**
- 257J A 10k gold dress ring, set with a single diamond in square mount with reed and shell motif shoulders, stamped '10k', size R, gross weight 3.3 grams.  
**£80-120**
- 257K An 18ct gold dress ring, with thirteen diamonds in a rectangular setting with reeded shoulders, stamped '750', size Q, gross weight 7.1 grams.  
**£250-350**
- 257L A 14k gold large ring, set with a rectangular emerald in raised claw setting, stamped '14k', size S, gross weight 6.7 grams.  
**£150-250**
- 257M A 9ct gold gents dress ring, set with a single diamond in 'sunburst' mount, with plain tapering band, size Q1/2, gross weight 4.2 grams.  
**£80-120**
- 257N A 10k gold large ring, set with a single diamond in square mount, stamped '10k', size R, gross weight 6.2 grams.  
**£100-150**
- 257O TIFFANY & Co, 'Etoile' platinum and diamond band ring, with ten randomly set diamonds, stamped 'T&Co.; PT 950', size R, gross weight 9.7 grams.  
**£150-250**
- 257P An 18ct white gold dress ring, set with three diamonds and two baguette cut sapphires, in asymmetric tapering band setting, stamped '18k', size Q1/2, gross weight 6.9 grams.  
**£200-300**
- 257Q A 9ct white gold dress ring, set with a square shaped diamond and four small diamonds to the corners, the tapering band with reeded shoulders, size Q, gross weight 5.8 grams.  
**£120-180**
- 257R An antique style gold ring, set with a pear shaped rose cut diamond within blue enamel border, with pierced and chased foliate shoulders, interior inscribed, in unmarked yellow gold mount, size T, gross weight 8.4 grams.  
**£250-350**
- 257S A white metal dress ring, set with a single diamond in square mount with unmarked white metal plain tapering band, size L, gross weight 8.9 grams.  
**£150-200**
- 258 A Ruskin pottery high-fired Sang De Beouf glazed vase, stamped marks, dated 1926, 34.5cm high; together with a Sotheby's auction catalogue, The Adam Ferneyhough Collection of Ruskin Pottery, London April 1993.  
**£600-800**
- 258A A Chinese porcelain blue and white saucer dish, Qing Dynasty, painted with mother and child in a garden within diaper border, six character mark within double rings, 10.5cm diameter, in fitted box with Dunt King, Hong Kong business card.  
**£50-100**
- 258B An Antique white metal horn powder horn, with coloured glass gem set detail, 24cm long.  
**£50-100**



## Antiques & Interiors, 20th Aug, 2025 - 21st Aug, 2025

- |  |  |
|--|--|
| <p>258C A white metal mounted dirk with orange coloured foil backed stones, the main body of the dirk and scabbard formed as one with detachable fork and knife.<br/><b>£70-150</b></p> <p>258D An Antique brass mounted horn powder mull, with incised panels of Celtic knotwork on both sides, overall 10.5cm long.<br/><b>£50-100</b></p> <p>258E A box of assorted uncut polished jadeite and other gem stones; together with a file containing assorted loose gem stones.<br/><b>£50-100</b></p> <p>258F A Halcyon Days Valentines Day 1977 oval enamel box, the cover and hinge loose; together with a Halcyon Days 'Climb high, climb far, your goal the sky, your aim the star' circular form paperweight.<br/><b>£20-50</b></p> <p>259 A collection of assorted loose silver and white metal beads and amber mounted beads; together with a mother-of-pearl EP berry spoon.<br/><b>£30-70</b></p> <p>259A A late 19th century Italian Pietra Dura rectangular shaped paperweight, inlaid with coloured stones depicting lily of the valley, 15.5cm x 10cm.<br/><b>£50-100</b></p> <p>259B Majliya by Jawahir, Oman, a pearl and white metal necklace; together with two other pearl necklaces.<br/><b>£50-100</b></p> <p>259C Three Middle Eastern white metal mounted amber fragments, gross weight 173 grams.<br/><b>£50-100</b></p> <p>259D A group of jewellery to include a pair of yellow metal, pearl and gem set drop earrings, Artery St Andrews; a green stone bead bracelet; a black and turquoise coloured necklace; and a multi-coloured gem set necklace.<br/><b>£40-80</b></p> <p>259E A box of assorted costume jewellery.<br/><b>£50-100</b></p> <p>259F A box of assorted silver to include a Birmingham silver photograph frame; two silver napkin rings; silver powder compact; silver cigarette box; silver spoon and pusher; and four silver backed brushes.<br/><b>£70-150</b></p> <p>260 A box of assorted coins and banknotes.<br/><b>£20-50</b></p> | <p>261 A Chinese figured wood table top casket of rounded rectangular form, the underside of the hinged cover with a mirrored plate, with circular brass lever lock, on ebonised plinth with bracket feet, 58cm wide x 22cm high x 24cm deep.<br/><b>£40-80</b></p> <p>262 Two brass cased carriage clocks; and a circular wall mounted barometer.<br/><b>£20-50</b></p> <p>263 A collection of eight assorted trinket boxes, the largest being a blue ground porcelain box painted with colourful panels of flowers, 9cm wide x 5cm high x 6cm deep.<br/><b>£50-80</b></p> <p>264 A collection of vintage P&amp;O Cruise Liner menu cards, circa 1950's, to include menus from 'SS Chusan'; 'SS Strathaird'.<br/><b>£20-50</b></p> <p>265 A vintage hunting knife in white metal mounted leather sheath, the blade inscribed 'Joseph Rodgers &amp; Sons, Sheffield', 25cm long.<br/><b>£20-50</b></p> <p>266 A North African Jambiya, overall 40.5cm long; together with a white metal and red semi-precious gem set Shabriya dagger, overall 22cm long.<br/><b>£50-100</b></p> <p>267 A late 19th/ early 20th century Japanese Tanto, with single edged slightly curved blade, shark skin handle and ebonised scabbard with silver plated mounts, blade 26cm long, overall 44.5cm long in scabbard.<br/><b>£50-100</b></p> <p>268 An Antique dagger, the hilt decorated with crown over Prince of Wales feathers and running horses, the double edged blade bearing date 1476, blade 30cm long, overall 46cm long.<br/><b>£40-80</b></p> <p>268A A collection of items to include vintage beadwork ladies evening bag; lacquered playing card box; two leather wallets; manicure set; and a carved wooden letter opener.<br/><b>£20-50</b></p> <p>269 A box of assorted vintage painted lead circus figures and animals.<br/><b>£20-50</b></p> <p>270 A box of assorted vintage painted lead circus animals and other animals.<br/><b>£20-50</b></p> |
|--|--|



## Antiques & Interiors, 20th Aug, 2025 - 21st Aug, 2025

- |  |   |
|--|---|
| <p>271 A box of assorted Chinese and Japanese tea wares to include Yixing miniature tea pot and cover, with coloured enamel decoration of peony, birds and butterfly; a Japanese agate ware tea pot and cover; a Japanese Kutani cup and saucer; assorted tea bowls.<br/><b>£20-50</b></p> <p>272 An Antique carved wooden pipe rack, 52cm high x 26cm wide.<br/><b>£40-80</b></p> <p>273 No Lot.<br/><b>£1-2</b></p> <p>274 A vintage boxed Britains Coronation Coach, no.1470.<br/><b>£20-50</b></p> <p>275 A late 19th/ early 20th century Japanese Wakizashi, blade 35.5cm long, overall 55cm long (not including scabbard).<br/><b>£50-100</b></p> <p>276 A gilt wood oval frame, inscribed to 'Grandma Piesse, born 1798', containing two extremely fine needlework embroidered baskets, and a silver medallion inscribed 'From Miss Coventry's School to Miss Mary Edwards 1811', overall 24cm wide x 18.5cm.<br/><b>£50-100</b></p> <p>277 A vintage Steam Turbine rectangular name plaque for 'C. A. Parsons &amp; Co Ltd, Newcastle-On-Tyne, Steam Turbine KW5000 RPM3000 no.2156', 17.5cm x 26.5cm.<br/><b>£20-50</b></p> <p>278 A vintage Angelus Descodate, of rectangular form enclosing clock, date aperture, barometer and thermometer, the brushed gilt metal case with pen tray to the front, approximately 19cm x 12cm.<br/><b>£30-70</b></p> <p>279 An Antique carved Alabaster bust head of a male figure, approximately 18cm x 11.5cm.<br/><b>£30-70</b></p> <p>280 An Art Deco style marble stone and gilt metal mounted clock garniture, the clock with Roman and baton numerals, the clock element 48cm wide x 22.5cm high, the clock companions 12.5cm wide x 12.5cm high.<br/><b>£40-80</b></p> | <p>281 A box of assorted items to include Japanese lacquered circular box and cover; a composite rectangular panel moulded in relief with late 18th century gentleman; assorted slides; ornamental blue enamel egg; jewellery; portrait miniature frame; etc.<br/><b>£20-50</b></p> <p>282 A pair of Chinese gilt metal square shaped jars and covers, late 19th/ early 20th century, with incised decoration of warriors, pavilions and mountains, both with six character Xuande marks but later, 20cm high.<br/><b>£40-80</b></p> <p>283 Three boxed blended whiskies to include Justerini &amp; Brooks Reserve 15yrs, 70cl, 43% Vol; Ballantynes Gold Seal Special Reserve scotch whisky, 75cl, 43% Vol; and Dimple 26&amp;2/3fl.ozs. 70% proof.<br/><b>£50-100</b></p> <p>284 One bottle of Chateau Leoville Barton 1990, Saint-Julien Cru Classe Bordeaux.<br/><b>£30-70</b></p> <p>285 One bottle of Chateau La Tour Du Roch-Milon, Pauillac 1962, Grand Vin De Medoc.<br/><b>£30-70</b></p> <p>286 A boxed bottle of Highland Park single malt scotch whisky, aged 12yrs, 40% Vol, 70cl.<br/><b>£40-80</b></p> <p>287 Seven framed Scottish banknotes to include The Royal Bank of Scotland £5 note, Edinburgh 31st May 1930, no.E3032 6357; The National Bank of Scotland £5 note, Edinburgh 11th November 1932, no.A927-667; North of Scotland Bank Ltd £20, Aberdeen 1st July 1943, no.HT03652; The Commercial Bank of Scotland Ltd £5 sterling, Edinburgh 5th January 1943, no.15/Z 00911; The Union Bank of Scotland Ltd £5, 16th January 1920, no.B941/073; North of Scotland Bank Ltd £5, Aberdeen 1st March 1932, no.A0813/0533; and a Bank of Scotland £5 note, Edinburgh 10th June 1926, no.4/K2602.<br/><b>£100-200</b></p> <p>288 A box of assorted vintage proof sets, crowns, etc.<br/><b>£50-100</b></p> |
|--|---|



## Antiques & Interiors, 20th Aug, 2025 - 21st Aug, 2025

- 289 James Bond Interest - The James Bond car collection to include Goldfinger Aston Martin DB5; Die Another Day Aston Martin V12 Vanquish; The Spy Who Loved Me Lotus Esprit; The World is Not Enough BMW Z8; For Your Eyes Only Citroen 2CV; and Die Another Day Jaguar XKR; each with corresponding magazine.  
**£30-70**
- 290 A collection of assorted pens to include Osmiroid Calligraphy pen; Bradley Corporate blue two pen set; boxed Crossed Classic Black pen; boxed Pentel Roller Ball; various loose to include Parker; Cross; Pentel; etc.  
**£30-70**
- 291 A box of assorted Proof Specimen and Commemorative coins to include The Battle of Waterloo one coin set; The Diamond Jubilee Weekend; Portraits of a Queen; World War I Centenary commemorative; etc.  
**£40-80**
- 292 A boxed vintage Corgi Toys Priestman Luffing Shovel no.1128; together with various Corgi Model Club models to include Jaguar E-Type 335; Ford Thunderbird Opensports 2155; Ford Mustang Fastback 2+2 Competition model 325; Ghia 5000 Mangusta 271; Garage Attendants 1505; Porsche Carrera 6 330; The Saints Car Volvo P1800; Bentley Continental Sports Saloon 224; James Bond's Aston Martin DB5 261; Land Rover Breakdown Truck 417; 1967 Monte Carlo Winner BMC Mini Cooper S 339; Lotus Climax Formula One racing car 155; and a tin containing certificates of authenticity.  
**£40-80**
- 293 A box of assorted fishing reels to include examples by Beaulite Shakespeare; Avon Royal; Roddy 320; Daiwa; Ryobi 355M; Strike Right Featherflow; and two other unnamed reels; together with three spools.  
**£20-50**
- 294 A large collection of assorted coins of the World.  
**£40-80**
- 295 A collection of vintage Corgi Collectors models to include three Best of British diecast metal subway trains; and five Limited Edition Original Omnibus models to include Q1 Trolley Bus Glasgow Corporation Transport; Guy Arab Utility Bus, W Alexander & Sons; AEC Utility Bus, Edinburgh Corporation; and two others.  
**£20-50**
- 296 A collection of assorted Proof coin collections, assorted coin covers; envelope of banknotes containing assorted Scottish £1 banknotes, Royal Bank of Scotland £5, Jack Nicklaus; and other banknotes of the World.  
**£40-80**
- 297 A collection of assorted souvenir teaspoons.  
**£20-50**
- 298 A collection of miniature model N Scale trains; carriages; trucks; etc; makers to include Bachmann; Grafar; Dapol; etc.  
**£30-70**
- 299 A box of assorted stamp albums and coins to include The Gay Venture Stamp Album; various first day covers; loose stamps; assorted crowns and other coins.  
**£20-50**
- 300 A box of assorted Matchbox Models, Models of Yesteryear, etc.  
**£20-50**
- 301 A box of assorted vintage Hornby O Gauge locomotives; trucks; vans; and wagons.  
**£50-100**
- 302 A collection of assorted Matchbox and Tonka model Aeroplanes, Hurricanes, Spitfires; together with various assorted model cars by Lledo, Corgi, Oxford, etc.  
**£20-50**
- 303 A box of assorted Corgi, Matchbox, Majorette and other toy cars, aeroplanes, models etc.  
**£20-50**
- 304 A Clarice Cliff rectangular shaped planter, decorated with spring crocus, 28cm wide x 8.5cm high.  
**£70-150**
- 305 A Chinese porcelain Famille Rose tea kettle and cover, 15.5cm high.  
**£30-70**
- 306 A late 19th/ early 20th century paraffin burning oil lamp, with opaque white shade, overall 68cm high.  
**£20-50**
- 307 A collection of assorted EP ware to include tureens; covers; bowls; sauce boats; sharpening steel; etc.  
**£40-80**
- 308 A pair of Royal Copenhagen soup plates, decorated with Deutsche Blumen, 24.5cm diameter.  
**£20-50**



## Antiques & Interiors, 20th Aug, 2025 - 21st Aug, 2025

- 309 A group of Royal Worcester ivory ground wares to include a pair of single handled ewers, 20cm high; a compressed oviform vase, 13.5cm high; and a tea cup and saucer; together with a Copeland ivory ground single handled jug, 21.5cm high.  
**£50-100**
- 310 A pair of brass octagonal shaped candlesticks with detachable drip pans, 21.5cm high.  
**£20-50**
- 311 A Dresden porcelain three handled mug, decorated with colourful flowers and foliage, 17cm high.  
**£20-50**
- 312 A Chinese porcelain blue and white vase, Qing Dynasty, decorated with figures on a bridge in a mountainous river landscape, (damages), 45cm high.  
**£70-150**
- 313 A set of ten Berlin porcelain hand-painted fruit plates, each decorated with a different bird with pierced borders, the details picked out in pink and gilt, sceptre marks, 23cm diameter.  
**£50-100**
- 314 A composite Royal Worcester blue dragon part coffee and dinner set.  
**£40-80**
- 315 A Royal Worcester ivory ground figure of a classical male hunter, 45cm high.  
**£50-100**
- 316 Four pieces of Clive Brooker pottery, the tallest piece 33cm high.  
**£70-150**
- 317 A collection of ceramics to include three Meissen porcelain blue and white onion pattern side plates and a similar oval dish; six assorted Meissen flower decorated plates/ soup plates; a hand-painted floral dish with gilt metal mount, marked 'Manufactured by Daniell 129 New Bond Street, Windsor Castle'; and two other floral decorated dishes.  
**£40-80**
- 318 Beetles Memorabilia Interest - A period vintage Beetles black glazed ceramic table lamp and shade, the shade printed with band members and songs, Twist & Shout; Hold Your Hand; All My Love; She Loves You; From Me to You; Till There Was You; Money; 29cm high.  
**£20-50**
- 319 A collection of assorted Royal Copenhagen blue and white commemorative plates.  
**£20-50**
- 320 A pair of French porcelain models of Cockerels, in the Chinese style, 35cm high.  
**£40-80**
- 321 A pair of late 19th century opaque white glass vases, with gilded horizontal band decoration, 34.5cm high.  
**£40-80**
- 322 A pair of Japanese porcelain tied sack form celadon ground vases on stands, decorated with birds and bamboo, late 19th/ early 20th century, 39cm high.  
**£50-100**
- 323 A Moore Brothers ivory ground part tea set, pattern no.352.  
**£20-50**
- 324 A collection of seven Royal Doulton figures to include Adrienne HN2152; Southern Belle HN2229; Autumn Breezes HN1934; Janette HN1537; Picnic HN2308; Bedtime HN1978; and Darling HN1985.  
**£20-50**
- 325 A green glass carafe and six matching tumblers.  
**£20-50**
- 326 A pair of Delft pottery octagonal shaped vases, decorated with figures fishing in a river landscape, the details picked out in blue, green and ochre, signed 'BP', 20.5cm high.  
**£40-80**
- 327 A Chinese porcelain blue and white eggshell bowl, decorated with dragons, 20.5cm diameter x 9cm high, in a fitted box.  
**£30-70**
- 328 A carved wood Cava bowl on four tapered cylindrical supports, 25cm diameter x 10cm high.  
**£20-50**
- 329 A collection of assorted decorative Baroness fruit and figural decorated ceramics to include three cabinet plates; jug and basin; cheese bell; and octagonal shaped bowl.  
**£30-70**
- 330 A group of ceramics to include Royal Worcester figure, limited edition Belle of the Ball no.3801/12500; Coalport figure, Ruby limited edition, no.1727/9500; a late 19th century figure of girl and boy; and a Nao porcelain model of a duck.  
**£20-50**



## Antiques & Interiors, 20th Aug, 2025 - 21st Aug, 2025

- |  |   |
|--|---|
| <p>331 An Antique pottery model of a recumbant lion on rectangular plinth, with brown and blue coloured markings, 17.7cm wide x 14cm high.<br/><b>£40-80</b></p> <p>332 An early 20th century Grafton China vine decorated part tea set, pattern no.5856.<br/><b>£20-50</b></p> <p>333 An 18th century Worcester porcelain blue and white twin-handled tureen, cover and stand, with applied floral decoration, crescent marks, the stand 27cm wide, the basket and cover 20cm wide x 13.5cm high, (damage to one tureen handle).<br/><b>£50-100</b></p> <p>334 A Venetian clear and blue glass decanter and stopper, with richly gilded details and a similar goblet; together with a ruby glass overlaid carafe; and a ruby and gilt glass ewer and stopper.<br/><b>£20-50</b></p> <p>335 An Imari palette part coffee and dinner set; together with a Limoges floral decorated part tea set.<br/><b>£30-70</b></p> <p>336 A collection of EP ware to include two coffee pots; flower vase; various oval shaped trays, dishes, etc.<br/><b>£40-80</b></p> <p>337 A collection of nine Doulton figures to include Embrace HN4258; Sweeting HN1935; Invitation HN2170; Monica HN1467; Blythe Morning HN2021; Paula HN2334; Katie HN4323; Spring Morning HN1922; and Helen HN3601.<br/><b>£40-80</b></p> <p>338 A Chinese porcelain Famille Rose vase, Qing Dynasty, decorated with panels of court figures on a ground of flowers, foliage and birds, the neck with shishi cub and ball terminals, the shoulders set with pairs of chilong, 46cm high (damages).<br/><b>£70-150</b></p> <p>339 A pair of Wood blue and white pottery King Charles spaniel dogs, 29cm high.<br/><b>£20-50</b></p> | <p>340 A collection of blue and white wares to include a British scenery octagonal shaped meat plate; an English oriental flower garden pattern ashet; a Chinese blue and white Teksing Treasure Shipwreck saucer; a pair of Japanese blue and white saucer dishes; a Japanese charger; Masons Kylin decorated plate; a Royal Worcester Pagoda decorated saucer; and another English plate centred with basket of flowers.<br/><b>£40-80</b></p> <p>341 A Meissen porcelain puce ground cup, cover and saucer, painted with figures and horses, blue cross swords mark; a white glazed ceramic figure, El Spinarrio; three pieces of Belleek porcelain; and a Devon Fieldings Sylvan lustre butterfly decorated pedestal bowl.<br/><b>£50-100</b></p> <p>342 A Poole pottery Delphis lozenge shaped tray, 44.5cm long.<br/><b>£20-50</b></p> <p>343 A group of Turi-Design 'Lotte' Figgio Flint, Norwegian table wares to include two tier cake stand; tureen and cover; jug and two rectangular stands.<br/><b>£30-70</b></p> <p>344 A dark amber tinted glass rolling pin with opaque white flecks, 38cm long.<br/><b>£20-50</b></p> <p>344A A Griselda Hill Wemyss pottery pig, decorated with beehive and bees, 11cm high x 23cm wide.<br/><b>£40-80</b></p> <p>345 A group of Royal Doulton character jugs to include Louis Armstrong D6707; North American Indian D6611; and Jolly Toby.<br/><b>£20-50</b></p> <p>346 An electroplated presentation bowl, together with an electroplated circular drinks tray.<br/><b>£20-50</b></p> <p>347 A collection of six assorted paperweights.<br/><b>£20-50</b></p> <p>348 Scotty Wilson for Royal Worcester, a conical shaped coffee pot; together with a lustre glazed tobacco jar and cover; assorted Devon pottery blue ground wares; and remaining Studio pottery.<br/><b>£40-80</b></p> <p>349 A collection of assorted Copeland Spode Italian pattern blue printed table ware.<br/><b>£50-100</b></p> |
|--|---|



## Antiques & Interiors, 20th Aug, 2025 - 21st Aug, 2025

- |  |  |
|--|--|
| <p>350 A bronzed figure of a Tang Dynasty Warhorse on ebonised rectangular plinth, 23cm high.<br/><b>£30-70</b></p> <p>351 A collection of assorted fishing reel spoils, House of Hardy; Ultralite; etc.<br/><b>£20-50</b></p> <p>352 A stamp collection to include Gay Venture stamp album; Fanfare stamp album, assorted first day covers.<br/><b>£20-50</b></p> <p>353 A Spode blue and white Armorial decorated part dinner set; together with a Villeroy &amp; Boch Casa Luke part tea set; and a British scenery purple printed plate.<br/><b>£40-80</b></p> <p>353A A pair of Spode Copeland powder blue ground cake plates with printed and painted floral roundels within richly gilded borders, 23cm diameter; together with a collection of remaining ceramic plates, dishes etc.<br/><b>£20-50</b></p> <p>354 A collection of assorted glassware to include green glass ewer with white and gilt decoration; together with remaining decanter, stopper, glasses, bells, etc.<br/><b>£20-50</b></p> <p>354A A Franklin Mint Precision Model Case SC Farm Tractor, in original box.<br/><b>£20-50</b></p> <p>355 A Copeland Spode blue printed octagonal ashet, Aesop's Fables, printed and impressed marks, 46cm x 35.5cm.<br/><b>£30-70</b></p> <p>356 A suite of stainless steel and wood mid-century cutlery and flatware, George Butler &amp; Co.<br/><b>£30-70</b></p> <p>357 A pair of 19th century opaque white glass rolling pins of large size, decorated with pictorial and written vignettes, approximately 73cm long.<br/><b>£100-200</b></p> <p>358 A 19th century blue printed octagonal shaped ashet, willow pattern, 49.5cm x 40cm.<br/><b>£30-70</b></p> <p>359 A collection of assorted EP ware to include Elkington &amp; Co canteen in mahogany box with brass plaque engraved with initials and dated '1920'; a cased set of teaspoons; a cased set of afternoon tea knives; a cased faux tortoiseshell dressing table set; and a small box of assorted EP wares to include spoons; pusher; a cruet set; flower vase; goblet; and book form vesta box.<br/><b>£40-80</b></p> | <p>360 A 19th century Palissy transfer printed twin-handled foot bath, 43cm wide x 21cm high.<br/><b>£40-80</b></p> <p>361 A decorative Chinese ceramic green/ blue glazed low garden stool, 23cm diameter x 23.5cm high.<br/><b>£20-50</b></p> <p>362 Two vintage collar boxes, one containing a smaller integral box within.<br/><b>£10-30</b></p> <p>363 A Paragon Athena pattern part tea set; together with a Paragon green ground floral decorated part tea set; and remaining floral decorated ceramics.<br/><b>£20-50</b></p> <p>364 A vintage Hohner Double Ray Accordion, in red marbled case.<br/><b>£30-70</b></p> <p>365 A boxed Corgi Fairground Attractions, The Southdown Gallopers, scale 1:50 model, limited edition 3035/6000, in original box with certificate; together with a Days Gone limited edition Showmans Collection Scammel Balust Box, T. Whitelegg with Helter Skelter.<br/><b>£40-80</b></p> <p>365A Two Border Fine Art figures, Kickstart B0541; and Feeding Time JH107.<br/><b>£30-70</b></p> <p>366 A vintage 'fishtail' tennis racket inscribed 'Alexandra, Kidd &amp; Wallace, Dundee'; together with a vintage squash racket.<br/><b>£20-50</b></p> <p>367 A vintage copper and brass hunting horn, 122cm long.<br/><b>£30-70</b></p> <p>368 A vintage leather top hat box, containing Rowans of Glasgow &amp; Edinburgh top hat, with wooden hat stretcher.<br/><b>£40-80</b></p> <p>369 An early 20th century oak table top cigar box in the form of a GWR coal wagon, 28cm wide.<br/><b>£50-100</b></p> <p>370 An early 20th century violin, inscribed on paper label 'Antonious Straduarius Cremonensis, Faciebad anno 1721'. 35.5cm long excluding button, in fitted case with a bow.<br/><b>£20-50</b></p> <p>371 A vintage Stetson oval shaped cardboard hat box.<br/><b>£20-50</b></p> |
|--|--|



## Antiques & Interiors, 20th Aug, 2025 - 21st Aug, 2025

- |  |  |
|--|--|
| <p>372 A late 19th century electroplated twin-handled oval tray, with engraved foliate borders, bearing initials 'GMM', 76cm x 48cm.<br/><b>£40-80</b></p> <p>373 An Antique English pewter sorbetiere, inscribed 'Lowther', 33cm high; together with another Antique English pewter sorbetiere, marked 'W Fuller, 60 Gernymn St. London', 32.5cm high.<br/><b>£30-70</b></p> <p>374 A group of four books to include The Moor &amp; The Loch Vols I &amp; II, John Colqhoun, 4th Edition; Half a Century of Scottish Deer Stalking, G. Kenneth Whitehead; and The Whitehead Encyclopaedia of Deer.<br/><b>£30-70</b></p> <p>375 One Volume, Hunting &amp; Stalking The Deer, The Pursuit of Red, Fallow &amp; Roe Deer in England &amp; Scotland, by Lionel Edwards RCA &amp; Harold Frank Wallace, Longmans Green &amp; Co Ltd, London 1930.<br/><b>£30-70</b></p> <p>376 One Volume, British Deer &amp; Their Horns, by John Guille Millais, London, Henry Southern &amp; Co, 1897.<br/><b>£70-150</b></p> <p>377 Three Volumes, The Holy Bible, Vols I &amp; II, one unnumbered.<br/><b>£40-80</b></p> <p>378 Two Volumes, Shires &amp; Provinces, and More Shires &amp; Provinces, by Sabretache, illustrated by Lionel Edwards.<br/><b>£40-80</b></p> <p>379 One Volume, Hunting &amp; Stalking The Deer, The Pursuit of Red, Fallow &amp; Roe Deer in England &amp; Scotland, by Lionel Edwards RCA &amp; Harold Frank Wallace, Longmans, Green &amp; Co Ltd, 1927, limited edition to 150 copies, of which this is no.109, signed by both Edwards and Wallace.<br/><b>£50-100</b></p> <p>380 Two Volumes, British Mammals, Vols I &amp; II, written and illustrated by A. Thorburn FZS, Longmans, Green &amp; Co, 1920.<br/><b>£40-80</b></p> <p>381 Two part leather bound volumes L'Art Du Cuisinier, 1814, by A. Beauvilliers.<br/><b>£30-70</b></p> <p>382 Four Volumes, British Birds, Vols I, II, III &amp; IV, written and illustrated by A. Thorburn FZS, Longmans, Green &amp; Co Ltd, 1918.<br/><b>£50-100</b></p> | <p>383 One Volume, The Household Physician, A 20th Century Medica, Boston Woodrough Publishing Co, Ink New Edition.<br/><b>£20-50</b></p> <p>384 Three wooden printers trays containing assorted lead type and hand-held letter tools, approximately 82cm x 42cm.<br/><b>£50-100</b></p> <p>385 No Lot.<br/><b>£1-2</b></p> <p>386 A vintage burr wood and marquetry inlaid cigar box, Monte Christo, Habana, 31.5cm wide.<br/><b>£20-50</b></p> <p>387 A late 19th century Chinese lacquered rectangular tea caddy, containing a detachable pewter tea liner within, with gilded chinoiserie decoration and twin carry handles to the sides, 33.5cm x 20cm.<br/><b>£40-80</b></p> <p>388 A 19th century mahogany and marquetry inlaid decanter box, the hinged cover with star inlaid motif, opening to a fitted four division interior, the front inlaid with conche shells, the sides with brass drop carry handles, 23cm wide x 26cm high.<br/><b>£40-80</b></p> <p>389 Two George III mahogany knife boxes, the larger 38cm high x 23cm, the smaller 37cm high x 22cm.<br/><b>£50-100</b></p> <p>390 A vintage red leather desk stand with gilt details and marbled papers within, 48cm long in the closed position.<br/><b>£20-50</b></p> <p>390A A group of six assorted Bells Whisky decanters.<br/><b>£30-70</b></p> <p>390B A smart late 19th/ early 20th century rosewood, brass and mother-of-pearl table top stationery cabinet, with two sprung doors opening to reveal fitted interiors, the doors inlaid with scroll and shell motifs, raised on four bun feet, 21.5cm wide x 30cm high x 16.5cm deep.<br/><b>£70-150</b></p> <p>391 Six boxed Russian white metal mounted tumbler cups, one lacking glass liner.<br/><b>£10-30</b></p> <p>392 A group of three assorted stamp albums various stamps of the World.<br/><b>£20-50</b></p> |
|--|--|



## Antiques & Interiors, 20th Aug, 2025 - 21st Aug, 2025

- |   |  |
|---|--|
| <p>393 A boxed vintage Hornby Clockwork no.101 Tank Passenger set.<br/><b>£30-70</b></p> <p>394 A Graham Farish by Bachmann Longmoor Military Railway special collectors edition, N Scale Train pack.<br/><b>£40-80</b></p> <p>395 A vintage Grants Scotch Whisky three bottle travelling decanter set.<br/><b>£20-50</b></p> <p>396 A pair of gilt metal flower form table lamps, overall 30.5cm high.<br/><b>£40-80</b></p> <p>397 A cased Birmingham silver gilt Limoges six piece coffee set.<br/><b>£50-100</b></p> <p>398 A Romney Plate oak cased canteen of cutlery and flatware.<br/><b>£30-70</b></p> <p>399 Two pairs of vintage childrens shoes comprising a pair of leather booties and a pair of silk slippers; together with a flower encrusted Alice band.<br/><b>£20-50</b></p> <p>399A A late 19th/ early 20th century brass inkwell, modelled as Daniel Lambert sitting eating a chicken, 10.5cm high x 16cm wide.<br/><b>£40-80</b></p> <p>400 Four assorted Delft pottery tiles, together with a catalogue of English Delft ware tiles, compiled by Jonathan Horne, one decorated with a sailing boat, one a figure holding a bird; one a two masted galleon, and one decorated in Manganese with a bird perching on a branch, approximately 12.5cm square.<br/><b>£40-80</b></p> <p>400A A small group of EP ware to include oval tureen and cover, inscribed with initials 'RA'; a half-pint measure; two silver napkin rings; and two pairs of nut cracks.<br/><b>£20-50</b></p> <p>401 A collection of assorted Antique pewter ware to include two large plates, approximately 38cm diameter; a shallow dish, 30cm diameter; a pair of side plates, 19cm diameter, both with stamped marks; five assorted flagons; a jug; and two assorted pepper pots.<br/><b>£40-80</b></p> <p>402 A collection of assorted glassware to include various goblets; tumblers; three decanters and stoppers, etc.<br/><b>£40-80</b></p> | <p>403 An octagonal shaped metal and glass three light hanging lantern, approximately 69cm high including hanging fixture x 33cm wide x 23cm deep.<br/><b>£40-80</b></p> <p>403A A collection of ceramics and glass to include a 19th century blue printed Well &amp; Tree type ashet, 49cm wide; a Continental porcelain blue and white oval tray, 35cm wide; two late 19th century graduated pottery jugs with rose garland detail; a small Chinese porcelain circular shaped Yin &amp; Yang famille rose dish, 9cm diameter; two glass paperweights; and a clear and green glass roemer with applied prunt detail to the stem; and a ruby and clear glass quatrefoil shaped wine goblet.<br/><b>£30-70</b></p> <p>404 A collection of assorted EP ware; together with a Royal Winton floral decorated ceramic jardiniere; and a Victorian grape moulded cream jug.<br/><b>£30-70</b></p> <p>404A A collection of assorted games to include two boxed Monopoly sets; chess board; dominoes; and Boddingtons Lexicon.<br/><b>£20-50</b></p> <p>405 A Victorian black lacquer papier-maché oval shaped tray, with richly gilded border, 78cm x 63cm.<br/><b>£40-80</b></p> <p>405A Two early 20th century teddy bears.<br/><b>£40-80</b></p> <p>405B Five bottles of assorted blended whisky to include Rare Selected Stuarts Cream of the Barley, 40% Vol, 70cl; Langs Supreme scotch whisky, 40% vol, 70cl; three bottles of The Famous Grouse, 40% Vol, 70cl (one boxed).<br/><b>£40-80</b></p> <p>405C Two boxed Scottish malt whiskies to include The Old Pulteney single malt scotch whisky aged 12yrs, 40% Vol, 70cl; and Dalwhinnie Winters Gold Highland single malt scotch whisky, 43% Vol, 70cl.<br/><b>£40-80</b></p> <p>405D A vintage Hornby County of Bedford clockwork locomotive, No.3821; a vintage Hornby Series Great Western tender; another clockwork Great Western Locomotive no.5627; together with a Great Western tender; and two other locomotives.<br/><b>£40-80</b></p> |
|---|--|



## Antiques & Interiors, 20th Aug, 2025 - 21st Aug, 2025

- 405E Four cased pairs of binoculars to include Ross, London 7x50 Steplux 125110; Lizars Melfort 8x30 no.23594; a pair of Aerolux 12x50 binoculars; and a pair of Lawrence & Mayo The Links; and a vintage cased monocular, The Luma, Aitchison of London no.2229.  
**£50-100**
- 405F A Carltonware Rouge Royale ground Mandarins Chatting pattern biscuit barrel and cover, printed and painted marks, D/769 over 3653, 17cm high.  
**£30-50**
- 406 Three boxes G&M Originals to include 14/32 Scale Collectables 'Jones Baler'; 'Marshall SM Thrasher'; and 'Marshall Agricultural Traction Engine'.  
**£40-80**
- 407 A brass two light table lamp with tapered rectangular shade, 51.5cm high.  
**£20-50**
- 408 Six vintage Tri-Ang Dairy Grade A milk metal milk containers and lids, 12.5cm high; together with a vintage Sharps toffee tin, the cover decorated with pictorial panel of Chelsea Pensioner and child standing before Buckingham Palace.  
**£30-70**
- 408A A group of three assorted Lladro figures.  
**£40-80**
- 408B A group of Doulton character jugs to include Falstaff D6385; Old Charley D5527; Mr Litigate D6699; and Charlie Cheer D6768.  
**£20-50**
- 408C A vintage Beatrix Potter Peter Rabbit bookstand, containing twenty-three volumes by Beatrix Potter, F. Warne & Co.  
**£20-50**
- 408D A collection of fifteen assorted Border Fine Art figures to include Secret Store B1543; Border Terrier Pup PG12; Symbol of Loyalty B0854; Field Study B0982; Woodland Ramble B0913; In Ermine B1374; Future Stars B0359; Walkies B0680; On The Farm; White Calf & Wellies A0168; Riverside Jewel B0805; Song Thrush A20691; Wee Timorous B1626; Starry Eyed B0542; and Waterbabies B0660; and one of a Robin perching on a trowel.  
**£50-100**
- 409 A pair of Old Hall twin-handled ceramic vases converted to table lamps and shades, approximately 66cm high.  
**£30-70**
- 410 A box of assorted vintage Corgi, Dinky and Lesney model cars, trucks, etc.  
**£30-70**
- 410A W. Britain, a Diecast Coronation Coach and horses, in box.  
**£30-50**
- 411 A box of assorted vintage Hornby O gauge railway accessories to include rails; cabins; tanks; stations; turntables; etc.  
**£50-100**
- 412 A box of KLM ceramic houses, exclusively made for KLM by Bols Distilleries, still with liquid contents.  
**£30-70**
- 412A A box of assorted vintage belts, braces, clothes hangers, etc.  
**£20-50**
- 413 A vintage wicker picnic hamper, cutlery, flasks, cups and saucers, etc.  
**£20-50**
- 414 A box of assorted hunting and fishing books to include Fishing Tackle, A Collectors Guide; Game and Fishing Laws of Scotland by Tait; The Law of Fishing by Stuart; The Law of Scotland as Applied to the Game Laws, Trout & Salmon Fishing by Tait; Salmon by Arthur Oglesby; The Pottery of Sport; Jock of The Bush Veld by Sir Percy Fitzpatrick; Salmon Fishing by Eric Taverner; Horn of The Hunter by Robert C Rourk; Hunting with Camera & Gun by Carel Hajeck; and Uber Rehe by A. Byern.  
**£50-100**
- 415 Two boxes containing four floral printed ochre ground curtains, approximately 290cm drop x approximately 265cm wide; and two brass Neoclassical style single light wall sconces.  
**£40-80**
- 416 Six prints of Perth to include Plan of Perth; Perth from Boatland House; St Johns Church; Marshall Place; High Street; and Perth from Pitheavlis Castle.  
**£20-50**
- 417 A large collection of assorted fishing rods; landing nets; etc.  
**£40-80**
- 418 A collection of assorted fishing tackle; books; caps; accessories; woven catch bags.  
**£30-70**
- 419 A box of assorted fishing reels, mainly spinning reels, makers such as Braid; Daiwa; Vigor; etc.  
**£50-100**



## Antiques & Interiors, 20th Aug, 2025 - 21st Aug, 2025

- |  |  |
|--|--|
| <p>420 A box of assorted fishing tackle to include boxed flies; etc.<br/><b>£30-70</b></p> <p>421 A box of assorted fishing line; etc.<br/><b>£30-70</b></p> <p>422 Five boxes of assorted fishing tackle.<br/><b>£50-100</b></p> <p>423 A large collection of assorted fishing rods.<br/><b>£50-100</b></p> <p>423A A group of four assorted Lladro figure groups.<br/><b>£40-80</b></p> <p>423B A group of five assorted Lladro figure groups and two Nao figures of birds in flight.<br/><b>£40-80</b></p> <p>423C Three boxed Mamod models to include Marine Steam Engine M.E.I; open wagon and steam tractor.<br/><b>£40-80</b></p> <p>423D A Paragon Fine China Pansy flower handled part tea set, No.G3684/3, comprising eleven cups; twelve saucers; twelve side plates; two cake plates; milk jug and sugar bowl; all cups with pansy flower head handles, moulded pansy decoration with green line detail on a lemon yellow ground.<br/><b>£200-300</b></p> <p>424 Two boxes of assorted model trains.<br/><b>£40-80</b></p> <p>425 A vintage Scalextric Sports Set 31; another box of later Scalextric track, cars, etc, to include a vintage C332 Maestro; a race-tuned C14 Matra JP; and a box of assorted model cars.<br/><b>£30-70</b></p> <p>426 A box of assorted vintage Corgi, Dinky, Matchbox, Lledo, model cars, buses, traction engines, etc.<br/><b>£20-50</b></p> <p>427 A box of boxed model diggers, earth moving vehicles, etc.<br/><b>£20-50</b></p> <p>428 A box of assorted Hornby O gauge to include tankers; track; buildings, etc; tankers to include Royal Daylight; Nestles Milk Richest in Cream; Motor BP Spirit; Motor Pratts Spirit.<br/><b>£20-50</b></p> <p>428A A collection of assorted Hornby railway track, loose and boxed, to include boxed signal control sets; etc.<br/><b>£20-50</b></p> | <p>428B One box of assorted boxed and unboxed Hornby, Mainline and other railway trains, trucks, carriages, etc; to include Hornby Intercity 125 Locomotive, etc.<br/><b>£30-70</b></p> <p>428C Three boxes of assorted Hornby railway trackside accessories, mainly boxed, to include platforms; signal box and level crossing; modern engine shed; etc.<br/><b>£40-80</b></p> <p>428D Two boxes of assorted Hornby trackside accessories, platforms; buildings; etc.<br/><b>£20-50</b></p> <p>428E A box of assorted items to include Eumig S3 Zoom Cinecamera in original polystyrene box; pair of Opticron Sequonah binoculars; a tripod; a Kodak Retina film viewer; and a Haynor Annette film editor.<br/><b>£20-50</b></p> <p>428F A box of assorted items to include postage scales; brass chamber candlestick; white metal single draw telescope; chip-carved wooden octagonal shaped tray; brass fire shovel and matching tongs.<br/><b>£20-50</b></p> <p>428G A box of assorted glassware.<br/><b>£10-20</b></p> <p>429 A box of assorted vintage camera equipment to include Pentax; ME Super SLR camera; a boxed Petri 7S 2.8 SLR camera; a vintage Fujifilm FinePix A330 digital camera; a Hanimex 52mm Skylight lens; another lens; flash unit; and a vintage Casio printing calculator.<br/><b>£30-70</b></p> <p>430 A box of assorted items to include a Chinese bronze model of a galloping horse; assorted glassware; Royal Worcester cake slice; brass bowl; case set of coffee spoons with bean terminals; etc.<br/><b>£30-70</b></p> <p>431 A collection of Hornby Duplo wagons, carriages, etc to include two volumes Locomotives by A M Bell.<br/><b>£20-50</b></p> <p>431A A box containing a collection of assorted vintage Britains painted lead military figures, campaign tents, field guns, etc.<br/><b>£30-70</b></p> |
|--|--|



## Antiques & Interiors, 20th Aug, 2025 - 21st Aug, 2025

- |  |  |
|--|--|
| <p>432 Two boxes of assorted Dinky, Matchbox, Corgi, Major and other toy cars, vehicles, lorries, construction vehicles etc; along with various volumes of Dinky Toys, Super Toys, Meccano magazines, etc.<br/><b>£40-80</b></p> <p>433 Two boxes of assorted ceramics.<br/><b>£20-50</b></p> <p>434 A vintage hand-stitched 'Mennonite Patchwork Quilt, Kitchener Ontario, circa 1900', worked in white and green coloured pieces.<br/><b>£30-70</b></p> <p>435 A box of assorted vintage childrens books.<br/><b>£20-50</b></p> <p>436 A box of assorted vintage military toy vehicles, tanks, motor carriage, etc, mainly The Ultimate Tank Collection.<br/><b>£30-70</b></p> <p>437 A box of assorted Graham Farish by Bachmann N Scale models, mainly boxed, locomotives, trucks, carriages; others by Dapol, etc.<br/><b>£40-80</b></p> <p>438 Two boxes of assorted postcards, Countries of the World, mainly categorised; together with a green coloured vintage postcard album.<br/><b>£30-70</b></p> <p>439 A box of assorted Special Edition Collectors Models 'World of Stobart' model trucks, 1:76 scale Diecast models.<br/><b>£40-80</b></p> <p>440 A box of assorted vintage Broons and Oor Willie Annuals.<br/><b>£30-70</b></p> <p>441 A stamp collection contained over three boxes, to include Royal Mail Special Stamps and various albums, one tan coloured album containing an assortment of Penny Red stamps.<br/><b>£50-100</b></p> <p>442 A box of assorted First Day cover albums.<br/><b>£20-50</b></p> <p>443 Two boxes of assorted boxed model toy cars, trucks; examples by Lledo Days Gone; Days Gone Vanguard; etc.<br/><b>£40-80</b></p> <p>444 A box of Editions Atlas Collections, The Greatest Show on Earth model trucks, trailers, etc.<br/><b>£30-70</b></p> | <p>445 Two boxes of assorted Britains model farm vehicles; other model cars; hovercrafts; Seacat fast ferry; etc.<br/><b>£40-80</b></p> <p>446 A box of assorted model ships to include Naval vessels; ferries; etc.<br/><b>£20-50</b></p> <p>447 A box of boxed model steamer ships; cruise liners; Naval battleships.<br/><b>£40-80</b></p> <p>448 A vintage Samocha Projector; together with a box of assorted vintage camera equipment to include a Polaroid 340; Pentax MZ50; Samsung digital camera; Olympus VX camera; Minolta Vectus 30 camera; and a Halina 1000 camera.<br/><b>£30-70</b></p> <p>449 A box of assorted model trains; locomotives; tenders; to include LNR Flying Scotsman and various others.<br/><b>£40-80</b></p> <p>450 A Police Officers dress jacket; together with a Royal Signals Officers uniform jacket and trousers.<br/><b>£20-50</b></p> <p>451 An Officers uniform for the Royal Signals, jacket and trousers.<br/><b>£20-50</b></p> <p>452 A Royal Signals Officers dress jacket, waistcoat and trousers.<br/><b>£20-50</b></p> <p>453 A group of fishing items to include four rods; two reels and a fly wallet.<br/><b>£40-80</b></p> <p>453A A pair of Antique wood and leather topped crutches, 117cm high.<br/><b>£20-50</b></p> <p>454 An unusual tapered segmented horn walking cane with pewter mounted top and inset coin detail; together with four other assorted walking canes; and a horn handled shepherds crook.<br/><b>£40-80</b></p> <p>454A Three decorative muskets, the flintlock mechanisms removed, 97cm long; and a decorative pistol, lacking flintlock mechanism, 54cm long.<br/><b>£40-80</b></p> <p>455 Five assorted split-cane fishing rods, to include two by Hardys; and a Brady of Halesowen canvas tackle bag containing assorted tackle.<br/><b>£40-80</b></p> |
|--|--|



## Antiques & Interiors, 20th Aug, 2025 - 21st Aug, 2025

- |  |   |
|--|---|
| <p>456 Two pairs of vintage black leather riding boots, complete with wooden shoe trees; one pair for Maxwell, Dover Street, London.<br/><b>£40-80</b></p> <p>457 A Chinese wall-hanging worked in pink, blue and ochre coloured threads depicting a mountainous landscape with peony in a cloud scroll border, on integral brass rail, fringed at the lower end, 158cm x 59cm.<br/><b>£20-50</b></p> <p>458 Follower of Claude Joseph Vernet (Avignon, 1714-1789, Paris)<br/>Figures at leisure by a waterfall in Italian landscape<br/>oil on canvas<br/>146cm x 192cm, framed 163cm x 209cm<br/><b>£300-500</b></p> <p>458A George Secan<br/>Landscape<br/>oil on canvas, signed lower left<br/>40cm x 50cm<br/><b>£20-50</b></p> <p>459 H B Carter<br/>Stormy Seas with shipping<br/>watercolour, signed and dated 1831 lower left<br/>framed and glazed 38.5cm x 53cm<br/>together with three other watercolours to include A Bracken, Still life of pink flowers in a blue jug, watercolour, signed lower left, framed and glazed 63cm x 56cm; an early 20th century British School, Rain over Skiddaw, Christmas 1934, framed and glazed 42.5cm x 48cm; and a late 20th century watercolour, Near Lanchester in County Durham, signed and dated '89, framed and glazed 57.5cm x 76cm<br/><b>£50-100</b></p> <p>460 E Jeffrey (20th century)<br/>A collection of five watercolours to include Near Brantwood, Coniston Water; Burnt Mill, Zedburgh; Hazy Morning, Ullswater; Howton Bay, Ullswater; and a Winter snow covered landscape<br/>all signed<br/>all framed and glazed, approximately 58.5cm x 74cm<br/><b>£50-100</b></p> <p>460A After Johannes Blaeu<br/>Gallogvidiae Pars Media, the middle part of Galloway<br/>hand-coloured map<br/>framed and glazed 48cm x 60cm<br/><b>£20-50</b></p> | <p>461 After Charles Bird King (1785-1862)<br/>Ne-Sou-A Quoit, a Fox Chief, and another Kish-Ke-Kosh, a Fox Brave<br/>coloured lithographs, both from Thomas Loraine McKenney &amp; James Hall, History of the Indian Tribes of North America<br/>both framed and glazed 65cm x 51.5cm<br/><b>£50-100</b></p> <p>462 <b>ARR</b> Adrian Heath (1920-1992)<br/>Abstract<br/>mixed media, signed with initials and dated '86 lower right<br/>23cm x 17.5cm, framed and glazed 42cm x 36cm<br/><b>£100-200</b></p> <p>463 <b>ARR</b> Patrick Procktor (1936-2003)<br/>Carafe glass and lemon<br/>watercolour, signed lower right<br/>39.5cm x 29.5cm, framed and glazed 57cm x 46.5cm<br/><b>£200-300</b></p> <p>464 <b>ARR</b> Patrick Procktor (1936-2003)<br/>Still life with flowers and bowl of fruit<br/>watercolour, signed lower left, dated '00<br/>40.5cm x 28.5cm, framed and glazed 57cm x 45cm<br/><b>£200-300</b></p> <p>465 <b>ARR</b> Alan Davie (Scottish, 1920-2014)<br/>Untitled OG.4000 2012<br/>oil on paper, signed and dated 2012 lower right<br/>20cm x 28cm, framed and glazed 36cm x 43cm<br/><b>£150-250</b></p> <p>466 <b>ARR</b> Alan Davie (Scottish, 1920-2014)<br/>Untitled OG.4389 2013<br/>oil on paper, signed and dated 2013 upper right<br/>24cm square, framed and glazed 41cm x 39cm<br/><b>£150-250</b></p> <p>467 <b>ARR</b> Alan Davie (Scottish, 1920-2014)<br/>Sixtet OG.3331 2011<br/>oil and felt-tip pen on paper, signed and dated 2011 upper left<br/>15cm x 14.5cm, framed and glazed 29.5cm x 26cm<br/><b>£150-250</b></p> <p>468 <b>ARR</b> Patrick Procktor (1936-2003)<br/>Still life with vase of flowers and two gulls<br/>mixed media watercolour, signed lower right<br/>37cm x 26.5cm, framed and glazed 53.5cm x 42.5cm<br/><b>£200-300</b></p> |
|--|---|



## Antiques & Interiors, 20th Aug, 2025 - 21st Aug, 2025

- 469 Arthur William Heintzelman (American, 1891-1965)  
L'etude D'enfant  
signed in pencil lower right, no.ED.80 lower left  
23cm x 16cm, framed and glazed 38cm x 30.5cm  
together with Kerr Eby (1890-1946), Tide Mill Marshes, etching, signed lower right, no.ED90 lower left, 19.5cm x 33.5cm, framed and glazed 35.5cm x 49cm  
**£40-80**
- 470 A pair of Japanese colour on silk pictures, one painted with two ducks; the other two geese; signed, both framed and glazed, 24.5cm x 31cm.  
**£30-70**
- 471 Richard James Digance  
Still life with poppy  
watercolour, signed with initials lower left  
framed and glazed 40cm square  
together with an unsigned 20th century still life of purple and white flowers in a tall vase, framed and glazed 56cm x 46cm  
**£30-70**
- 472 **ARR** Alan Davie (Scottish, 1920-2014)  
Untitled  
Mixed media, signed and dated Aug 2010 lower right  
21.5cm x 15cm, framed and glazed 37.5cm x 31cm  
**£100-200**
- 473 **ARR** Alan Davie (Scottish, 1920-2014)  
Untitled  
mixed media, signed and dated Aug 2010 lower right  
14.5cm x 14cm, framed and glazed 31cm x 30cm  
**£100-200**
- 474 John Duncan  
View of St Andrews and East Sands  
watercolour, signed lower right, dated '66  
24.5cm x 35cm, framed and glazed 49.5cm x 59cm  
**£40-80**
- 475 **ARR** George Hamilton Constantine (1878-1967)  
  
On the Solway Firth and Showery Morning, Galloway, a pair  
watercolours, both signed and inscribed lower left  
24.5cm x 34.5cm, both framed and glazed 49cm x 60cm  
**£150-300**
- 476 William Scott Myles (fl.1850-1911)  
Summer landscape, fields with haystacks  
oil on canvas, signed lower left  
34.5cm x 52.5cm, framed 59cm x 76.5cm  
**£100-200**
- 477 20th century British School  
A Bay Thoroughbred  
oil on canvas, signed with initials lower left  
44.5cm x 59.5cm, framed 57.5cm x 72.5cm  
**£50-100**
- 478 Two Chinese silkwork pictures, one decorated with figures worked in coloured threads within a blue ground border, framed and glazed, 68.5cm x 36cm; the other depicting a procession of figures and dragon worked in coloured threads, framed and glazed 44.5cm x 75cm.  
**£40-80**
- 479 No Lot.  
**£1-2**
- 480 **ARR** Alan Davie (Scottish, 1920-2014)  
Untitled  
three biro drawings on paper, each signed lower left and dated 2014 lower right  
each approximately 15cm x 14cm, framed and glazed 29cm x 61.5cm  
**£150-250**
- 481 **ARR** Alan Davie (Scottish, 1920-2014)  
Untitled  
three biro drawings, all signed and dated 2014  
centre drawing 13cm square; other two approximately 14cm square, framed and glazed 27cm x 61cm  
**£150-250**
- 482 J. Morris (19th century)  
Strachan, Near Loch Fyne  
watercolour, signed lower right  
25cm x 45cm, framed and glazed 45cm x 65cm  
**£30-70**
- 483 **ARR** Alan Davie (Scottish, 1920-2014)  
Untitled  
mixed media, signed upper middle and dated Sept 2008  
26cm x 19.5cm, framed and glazed 41.5cm x 35cm  
**£100-200**
- 484 **ARR** Alan Davie (Scottish, 1920-2014)  
Untitled  
mixed media, inscribed and dated 2011 lower right  
16.5cm x 14cm, framed and glazed 34.5cm x 31.5cm  
**£100-200**



## Antiques & Interiors, 20th Aug, 2025 - 21st Aug, 2025

- |   |  |
|---|--|
| <p>485 After Frans Hals<br/>The Flute Player<br/>charcoal<br/>28cm x 21.5cm, framed and glazed 37.5cm x 31.5cm<br/><b>£50-100</b></p> <p>486 Juliette McLeod<br/>Portrait of a running horse<br/>coloured chalk, signed lower left<br/>34cm x 43cm, framed and glazed 52cm x 61cm<br/>together with two others by the same hand, both framed and glazed 46cm x 54cm and 59cm x 71cm<br/><b>£50-100</b></p> <p>487 <b>ARR</b> Alan Davie (Scottish, 1920-2014)<br/>Untitled<br/>three biro drawings, mounted in the same frame, two dated 2011, one dated 2014<br/>centre drawing 15cm x 13.5cm, left drawing 12cm x 13.5cm, right drawing 12cm x 14cm, framed and glazed 29cm x 59cm<br/><b>£150-250</b></p> <p>488 <b>ARR</b> Alan Davie (Scottish, 1920-2014)<br/>Untitled<br/>three biro drawings, mounted in the same frame, all signed, two dated 2013, one dated 2014<br/>centre drawing 15cm x 13cm, left drawing 12.5cm x 14cm, right drawing 13.5cm x 12.5cm, framed and glazed 29cm x 59.5cm<br/><b>£150-250</b></p> <p>489 <b>ARR</b> Alan Davie (Scottish, 1920-2014)<br/>Untitled<br/>three biro drawings, all signed, one dated '09, one dated 2013, one dated 2014<br/>centre drawing 21cm x 11cm, left drawing 18cm x 14.5cm, right drawing 14cm x 13cm, framed and glazed 33cm x 58.5cm<br/><b>£150-250</b></p> <p>490 Daniel Sherrin (1869-1940)<br/>Sunset landscape with thatched cottages and figures<br/>oil on canvas, signed lower left<br/>49cm x 74cm, framed and glazed 76cm x 101cm<br/><br/><b>£200-400</b></p> <p>491 Stewart Carmichael (1867-1950)<br/>The Green Dress, portrait of a lady<br/>oil on canvas, signed with initials and dated 1905 lower left<br/>71cm x 90cm, framed 90cm x 108cm<br/><b>£200-300</b></p> | <p>492 J. L. (early 20th century)<br/>Portrait of an Officer of The Royal Artillery<br/>oil on canvas, indistinctly signed and dated '44 lower right<br/>59cm x 49cm, framed and glazed 75cm x 65cm<br/><b>£70-150</b></p> <p>493 J J E (19th century)<br/>Summer river scene with boats and figures on the river bank<br/>watercolour, indistinctly signed and dated 1874 lower right<br/>33.5cm x 72.5cm, framed and glazed 54cm x 93.5cm<br/><b>£50-100</b></p> <p>494 <b>ARR</b> Owen Bowen RCA (Staithes Group, 1873-1967)<br/>Pansies and another, Roses, a pair<br/>oils on panel, both signed lower right, both inscribed on labels verso<br/>34cm x 24cm, both framed and glazed 59cm x 48.8cm<br/><b>£200-400</b></p> <p>495 George Melvin Rennie (1874-1953)<br/>Summer Highland landscape with loch, path and silver birch trees<br/>oil on canvas, signed lower left<br/>39cm x 59.5cm, framed and glazed 60cm x 81cm<br/><b>£150-300</b></p> <p>496 19th century English School<br/>Fishing boats, probably off the Norfolk coast<br/>pen and ink<br/>28cm x 42cm, framed and glazed 48.5cm x 62.5cm<br/><b>£40-80</b></p> <p>497 Sidney Baker (exh.1881-1883)<br/>View of Queen Street, Great Yarmouth, looking west<br/>watercolour, signed lower right, inscribed on label verso<br/>48cm x 38cm, framed and glazed 73cm x 62cm<br/><b>£40-80</b></p> |
|---|--|



## Antiques & Interiors, 20th Aug, 2025 - 21st Aug, 2025

- 498 **ARR** Charles Johnson Payne 'Snaffles' (1884-1967)  
Tally Ho Back  
coloured lithograph, signed on the mount  
framed and glazed 41cm x 54.5cm  
together with another That Far, Far-Away Echo,  
coloured lithograph, signed on the mount,  
framed and glazed 41cm x 53cm; and a  
coloured print, The 18th Fairway, The Old  
Course St Andrews, after R Gordon B White,  
framed and glazed 47.5cm x 51cm  
**£50-100**
- 499 Robert McGowan Coventry ARSA RSW (1855-1941)  
Anstruther, sketch of boats  
watercolour, signed lower right  
12.5cm x 19cm, framed and glazed 32cm x 38cm  
**£20-50**
- 500 Arthur Hughes  
Beach scene at lowtide with damaged fishing  
boat, fisherman, horse and cart  
watercolour, inscribed on label verso  
11.5cm x 19cm, framed and glazed 32cm x 38.5cm  
**£20-50**
- 501 19th century English School  
Coastal scene with busy shoreline and mixed  
shipping  
oil on canvas  
44.5cm x 74.5cm, framed 58.5cm x 88.5cm  
**£70-150**
- 502 E. Jeffrey (20th century)  
Kingfisher and Dragonfly  
watercolour  
framed and glazed 38.5cm x 31cm  
together with another by the same hand, Three  
Bluetits and a Bumblebee, framed and glazed  
53.5cm x 35.5cm; and another, Two Bluetits and  
Spider Web, framed and glazed 53.5cm x 35.5cm  
**£40-80**
- 503 H M Phillips (early 20th century)  
Fishing Wherries, off the Norfolk coast  
oil on canvas, signed and dated lower left  
41.5cm x 52cm, framed and glazed 53.5cm x 64cm  
together with two others by the same hand, both  
framed and glazed 37cm x 47cm and 37cm x 42cm  
**£50-100**
- 504 **ARR** May Hutchison  
Figures in a landscape  
oil on canvas, signed lower left  
44.5cm x 59.5cm, framed 56cm x 71.5cm  
together with another by the same hand, Four  
children on a beach, oil on canvas, signed lower  
left, 44cm x 59.5, framed 58.5cm x 74cm  
**£50-100**
- 505 Two Antique samplers, one worked in coloured  
threads with alphabet and verse, by Mary  
Milican, her work in the 8th year of her age,  
1788, framed and glazed 57.5cm x 24cm;  
together with another 19th century needlework  
sampler, worked in coloured threads with  
alphabets, by Elizabeth Bowen's, 1822, framed  
and glazed 32cm x 29cm.  
**£40-80**
- 505A A collection of five assorted samplers, early 19th  
century and later, to include an alphabet and  
number sampler inscribed with verse, dated  
1801, framed and glazed 40cm x 20.5cm;  
another similar undated sampler worked in  
green, blue, pink and yellow coloured threads  
with alphabet, numbers and urns issuing flowers  
and birds, framed and glazed 40cm x 28cm; an  
undated 19th century sampler by Hannah Marie  
Hodge, aged 8yrs, worked in red and green  
coloured threads, framed and glazed 34cm x 26.5cm; a 19th century sampler worked in black  
coloured threads on a natural ground, done by  
Hannah, daughter of William and Hannah  
Taylor, in the 11th year of her age 1828, framed  
and glazed 28.5cm x 28cm; and an early 20th  
century sampler worked in coloured threads,  
inscribed HM The King, framed and glazed  
32.5cm x 28.5cm.  
**£50-100**
- 506 Contemporary School  
Portrait of a woman after Picasso  
oil on canvas  
framed 67cm x 57cm  
**£40-80**
- 507 William Charles Estall (1857-1897)  
Summer landscape with figure and sheep by the  
riverbank  
oil on panel, signed lower left  
30.5cm x 42.5cm, framed and glazed 44.5cm x 56cm  
**£100-200**



## Antiques & Interiors, 20th Aug, 2025 - 21st Aug, 2025

- |   |  |
|---|--|
| <p>508 C. De Laise<br/>Portrait of bearded gentleman wearing a red coloured bonnet<br/>oil on panel, incised signature lower right, inscribed verso<br/>22cm x 16cm, framed 40cm x 34cm<br/><b>£40-80</b></p> <p>509 After Jane Stewart Smith (1839-1925)<br/>The Royal Mile, Edinburgh<br/>hand-coloured print<br/>35cm x 25cm, framed and glazed 50cm x 40cm<br/><b>£20-50</b></p> <p>510 <b>ARR</b> Francois Franc (1926-1989)<br/>Snow covered winter landscape<br/>oil on canvas, signed lower right<br/>21cm x 26cm, framed 35cm x 40cm<br/><b>£60-80</b></p> <p>511 John Hall-Thorpe (1874-1947)<br/>Nasturtiums<br/>woodblock print, signed<br/>20.5cm x 18.5cm, framed and glazed 40cm x 32cm<br/><b>£60-80</b></p> <p>512 19th century British School<br/>Half-length portrait of Captain Dyson, Deputy Judge Advocate General, Indian Army<br/>oil on canvas<br/>75cm x 63cm, framed 96cm x 83cm<br/><b>£100-200</b></p> <p>513 Late 19th century British School<br/>Fallow Deer, Roe Deer and Klipspringer<br/>coloured print<br/>framed and glazed 46cm x 55cm<br/><b>£30-70</b></p> <p>514 After G. D. Giles<br/>Gadesby, Corn Hunt 1895<br/>coloured print, inscribed lower middle, signed lower left<br/>framed and glazed 65cm x 74cm<br/><b>£30-70</b></p> <p>515 J. Moir (19th century)<br/>Half-length portrait of gentleman<br/>oil on canvas, inscribed on the reverse 'Painted by J Moir - 1825'<br/>73cm x 59cm, framed 87cm x 72cm<br/><b>£100-200</b></p> <p>516 <b>ARR</b> Trevor Bell (1930-2017)<br/>Blue Mask<br/>mixed media on paper, signed, inscribed and dated 1987 lower left<br/>78cm x 98cm, framed and glazed 98cm x 119cm<br/><b>£300-500</b></p> | <p>517 <b>ARR</b> Simeon Stafford (b.1956)<br/>House on the beach<br/>oil on canvas, signed lower right, inscribed verso<br/><br/>88cm square, framed 104cm square<br/><b>£300-500</b></p> <p>518 <b>ARR</b> Simeon Stafford (b.1956)<br/>San Michels Mount<br/>oil on canvas, signed lower right, inscribed verso with date 12.6.7<br/>88cm square, framed 104cm square<br/><b>£300-500</b></p> <p>519 <b>ARR</b> Neil Dallas Brown (1938-2003)<br/>Wrack Poem (Still harbour)<br/>painted board, inscribed on label verso<br/>151cm long<br/>together with a folio of paperwork and literature relating to the artist<br/><b>£50-100</b></p> <p>519A <b>ARR</b> Ralston Gudgeon RSA RSW (1910-1984)<br/>Bluetit<br/>watercolour, signed with initials lower right<br/>12.5cm x 14.5cm, framed and glazed 34cm x 41.5cm<br/><b>£40-80</b></p> <p>519B James Garden Laing RSW (1852-1915)<br/>Unloading the catch at low tide<br/>watercolour, signed lower right<br/>37.5cm x 57.5cm, framed and glazed 64cm x 83cm<br/><b>£100-200</b></p> <p>519C Wilfred Alfred Gibson (1866-1931)<br/>Landscape with three figures harvesting in the fields, a windmill beyond<br/>watercolour, signed lower left<br/>13.5cm x 21cm, framed and glazed 46cm x 62cm<br/><b>£100-200</b></p> <p>519D Alexander Ballingall (1870-1910)<br/>Coming ashore to unload the catch<br/>watercolour, signed lower right<br/>31.5cm x 49cm, framed and glazed 58.5cm x 75cm<br/><b>£100-200</b></p> <p>520 Two 20th century mirrors to include a rectangular bevelled gilt framed wall mirror, overall 53cm x 77cm; together with a clear and peach glass dome top bevelled wall mirror with shell and scroll surmount, 70cm x 46cm.<br/><b>£40-80</b></p> |
|---|--|



## Antiques & Interiors, 20th Aug, 2025 - 21st Aug, 2025

- |   |  |
|---|--|
| <p>521 An early 20th century mahogany display cabinet, fitted with central glazed astragal door flanked by two cupboard doors on either side, 137.5cm wide x 117.5cm high.<br/><b>£20-50</b></p> <p>522 A 19th century mahogany and ebony lined dressing table mirror with oval mirror plate, on rectangular base with single drawer, on turned feet, 63cm high x 49.5cm wide.<br/><b>£20-50</b></p> <p>523 Four Chinese watercolours on pith paper, 19th century, flower studies, two with butterflies, framed and glazed approximately 36cm x 29cm.<br/><b>£30-70</b></p> <p>524 An early 20th century ash mirror back dressing chest, the upright back with rectangular bevelled mirror plate and small drawer, on a base fitted with two short over three long drawers, 99cm wide x 168cm high x 46.5cm deep.<br/><b>£40-80</b></p> <p>525 An Art Deco style darkwood sideboard, with three cupboard doors opening to a fitted interior with six pull-out half drawers and one adjustable shelf, 164cm wide x 81cm high x 63.5cm deep.<br/><b>£20-50</b></p> <p>526 A late 19th/ early 20th century Moorish square shaped occasional table/ urn stand, with mother-of-pearl inlaid detail, 30cm square x 63cm high.<br/><b>£30-70</b></p> <p>527 A giltwood wall bracket, with demi-lune shelf and ribbon tied detail, 32cm wide x 34cm high; together with a pair of giltwood wall brackets, 21cm x 25cm; and a composite wall bracket, modelled with head of a puti, 16.5cm wide x 15cm high.<br/><b>£40-80</b></p> <p>528 An Arts &amp; Crafts pewter circular bevelled wall mirror, the hammered frame set with four Ruskin type green and blue glazed ceramic cabochons, 51cm diameter.<br/><b>£40-80</b></p> <p>529 A 19th century giltwood overmantle mirror, with Anthemion detail and claw and ball feet, 136cm wide x 80cm high.<br/><b>£100-200</b></p> <p>530 A late 19th/ early 20th century Burmese darkwood and brass inlaid rectangular shaped blanket box, carved with panels of figures, with drop carry handles on the sides, opening to a fitted interior with two compartments, 83.5cm wide x 52cm high x 45.5cm deep.<br/><b>£100-200</b></p> | <p>531 Cattely &amp; Co, Hereford, a 19th century mahogany and boxwood lined wheel barometer, with flower and conch shell inlay, 98cm.<br/><b>£40-80</b></p> <p>532 An early 20th century chip-carved stained beech spinning chair, 92cm high.<br/><b>£20-50</b></p> <p>533 A 19th century mahogany occasional table, the rectangular top fitted with two frieze drawers, each with lion mask and ring handles, on a base with four tapered square supports united by an X-shaped stretcher, 38cm wide x 68cm high x 26cm deep.<br/><b>£40-80</b></p> <p>534 A 19th century satinwood and ebony lined fold-over games table, the hinged rectangular top with canted angles opening to a baize lined interior, raised on four turned supports resting on a rectangular platform and four downswept legs, terminating in brass paw feet and castors, 91.5cm wide x 72cm high x 45cm deep.<br/><b>£50-100</b></p> <p>535 After Archibald Thorburn<br/>Two prints of Grouse<br/>framed and glazed 51.5cm x 65cm<br/><b>£30-70</b></p> <p>536 A late 19th century mahogany and boxwood lined inverted breakfront bookcase, the upper section set with four astragal glazed cupboard doors opening to a fitted interior with twelve adjustable shelves, on a base fitted with four cupboard doors, each opening to a shelf lined interior, 194cm wide x 223cm high x 47cm deep.<br/><b>£300-500</b></p> <p>537 A collection of furniture to include a vintage mahogany towel rail with folding end sections, 101cm wide (open) x 110cm high; a pine cupboard with arched single cupboard door, 62cm wide x 66cm high, a 19th century mahogany chest, fitted with a central deep drawer flanked by two shallow drawers to one side, a deep drawer to the other, over three long drawers enclosed by cylindrical columns, plinth base no longer present, 122cm wide x 116cm high x 60cm deep; an Edwardian mirror back dressing chest, 106cm wide; a 19th century mahogany chest of two short over three long drawers, 100cm wide; and a late 19th century walnut mirror back dressing chest, 106cm wide (6).<br/><b>£50-100</b></p> |
|---|--|



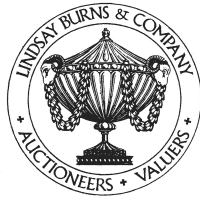
## Antiques & Interiors, 20th Aug, 2025 - 21st Aug, 2025

- 537A A pair of Sonos model Play5 speakers, 36.5cm wide.  
**£20-50**
- 538 A 19th century mahogany longcase clock, J & W Orr, Airdrie, the enamelled dial with Roman numerals, subsidiary seconds and date dials, twin train movement striking on a bell within tapered rectangular case on rectangular plinth, raised on bun feet, pendulum, weights and winding key present, 198cm high (to top of case excluding pediment).  
**£100-200**
- 539 A George III oak longcase clock, Henry Messer, Southampton, the brass dial with silvered chapter ring bearing Arabic and Roman numerals, with subsidiary seconds dial and date aperture, the twin train four pillar movement striking on a bell, within dome top hood with blind fretwork detail, the trunk with fluted angles, weight, pendulum and winding key present, 210cm high.  
**£70-150**
- 539A A George III mahogany chest, the rectangular top with moulded edge above three frieze drawers and three long graduated cockbeaded drawers, raised on bracket feet, 122cm wide x 101cm high x 54cm deep.  
**£50-100**
- 539B A reproduction George III style mahogany demi-lune console table, with fluted frieze divided by oval patera, raised on four tapered square section supports with shaped square feet, 106cm wide x 76.5cm high x 52.5cm deep.  
**£50-100**
- 540 A pair of 20th century mahogany club armchairs, with upholstered back, arms and loose cushion seats, the arms with scroll and swag detail, raised on shaped rectangular supports, 82cm high.  
**£50-100**
- 541 A vintage Victorian style Greensmith Connaught two seater sofa; together with a similar Connaught standard armchair on tapered turned beechwood supports with brass castors.  
**£150-300**
- 542 A 19th century mahogany snap-top supper table, together with five mahogany and brass inlaid dining chairs; the table with circular top on plain tapered column and concave platform base with bun feet and recess castors, 131cm diameter x 69.5cm high; the dining chairs with contemporary upholstered seats raised on tapered cylindrical supports with brass line detail to the top rails.  
**£70-150**
- 543 A nest of three Ercol pebble shaped occasional tables, 65cm wide x 40cm high.  
**£40-80**
- 544 Two boxes of assorted decorative pictures and prints of hunting, military and topographical interest.  
**£30-70**
- 545 A pine chest of two short over two long drawers, 87cm wide; together with a white painted pine chest of two short over two long drawers, 87cm wide.  
**£20-50**
- 546 A pair of 19th century rosewood pole screens, 140cm high.  
**£40-80**
- 547 A late 19th century mahogany chest, fitted with two short over three long graduated cockbeaded drawers, raised on bracket feet, 95cm wide x 105.5cm high x 52cm deep.  
**£30-70**
- 548 A group of oak furniture to include side table with single frieze drawer, 69cm wide; stool shaped occasional table with hinged rectangular top, 38cm wide; and a hall chair, 103cm high (3).  
**£40-80**
- 548A A 19th century rosewood pedestal games/ card table, the hinged rounded rectangular top opening to a green baize lined interior, raised on a tapered cylindrical column with foliate carved collar on concave platform base with paw feet and recessed brass castors, 91.5cm wide x 74cm high x 45cm deep.  
**£100-200**
- 549 A George III style mahogany chest, the rectangular top with moulded edge over two short drawers and two long graduated drawers, raised on square section supports with pierced fretwork spandrels, 104.5cm wide x 86cm high x 50cm deep.  
**£50-100**



## Antiques & Interiors, 20th Aug, 2025 - 21st Aug, 2025

- |  |   |
|--|---|
| <p>550 Seven assorted decorative pictures and prints to include a set of four Parisian coloured prints of amorous scenes; and three other decorative pictures.<br/><b>£20-50</b></p> <p>551 A mahogany dressing table mirror, 34.5cm wide x 54cm high.<br/><b>£10-20</b></p> <p>552 An early 20th century oak hall settle, the upright back with angular pediment above a hinged rectangular seat flanked by scroll and foliate carved arms, 106cm wide x 99cm high x 55cm deep.<br/><b>£100-200</b></p> <p>553 An Edwardian mahogany and satinwood banded sideboard, the upright back with brass rail, over a central frieze and blind drawer below, flanked by cupboard doors on either side, raised on six tapered square supports with spade feet, 168cm wide x 125cm high x 60cm deep.<br/><b>£50-100</b></p> <p>554 A copper and brass pail with single hinged handle, 42cm diameter x 32cm high.<br/><b>£20-50</b></p> <p>555 A 19th century oak coffer, the hinged rectangular top with chip-carved edges, above a triple panelled front, 130cm wide x 68cm high x 59cm deep.<br/><b>£50-100</b></p> <p>556 Three assorted occasional tables comprising an Edwardian mahogany and satinwood banded square occasional table, 54cm high; a bamboo and clear glass circular occasional table, 53cm high; and a musical inlaid rectangular occasional table, 45.5cm high.<br/><b>£20-50</b></p> <p>557 A 19th century mahogany and boxwood lined chest, fitted with three small cockbeaded drawers over three long graduated drawers, raised on bracket feet, 113cm wide x 97cm high x 52.5cm deep.<br/><b>£50-100</b></p> <p>558 A 19th century mahogany chest, fitted with three small cockbeaded drawers over three long graduated cockbeaded drawers, all with turned knob handles, raised on bun feet, 138cm wide x 119cm high x 56cm deep.<br/><b>£50-100</b></p> <p>559 A decorative Japanese Satsuma style ceramic barrel shaped garden seat, 28cm diameter x 45cm high.<br/><b>£40-80</b></p> | <p>560 A late 19th century stained oak Gothic pew of small size, 112cm wide x 83cm high x 46cm deep.<br/><b>£70-150</b></p> <p>561 An Antique oak mule chest, the double hinged rectangular top above a triple panel front and two shallow drawers, 148cm wide x 78cm high x 53cm deep.<br/><b>£50-100</b></p> <p>562 Whytock &amp; Reid of Edinburgh, a mahogany two seat sofa, raised on tapered square supports with brass cups and castors, retaining W&amp;R monogrammed ticking, covered in loose green coloured covers with fringed detail, approximately 140cm wide x 77cm high x 74cm deep.<br/><b>£400-600</b></p> <p>563 A set of seven George III style mahogany dining chairs, with pierced interlaced splats above green upholstered leather seats, raised on square channelled supports united by H-shaped stretchers.<br/><b>£50-100</b></p> <p>564 An early 20th century oak bookcase, fitted with two astragal glazed cupboard doors opening to a fitted interior with eight adjustable shelves, with dentil cornice and bracket feet detail, 110cm wide x 147.5cm high x 27cm deep.<br/><b>£50-100</b></p> <p>565 A late 19th/ early 20th century oak pedestal desk, 122cm wide x 75cm high x 65cm deep.<br/><b>£50-100</b></p> <p>565A A box of assorted decorative pictures and prints to include two portrait photographic prints depicting young ladies.<br/><b>£20-50</b></p> <p>566 An early 20th century Art Nouveau wardrobe, fitted with single bevelled mirror door with stylised foliate carved panels, and a long drawer with later handles, 139cm wide x 201.5cm high x 55cm deep.<br/><b>£40-80</b></p> <p>567 A pair of George III style reproduction mahogany end/ occasional tables, each fitted with a shallow frieze drawer on turned supports with brass cups and castors, 46cm square x 60cm high.<br/><b>£50-100</b></p> <p>568 A 19th century mahogany and canework cradle on stand, 92cm wide x 144cm high.<br/><b>£50-100</b></p> |
|--|---|



## Antiques & Interiors, 20th Aug, 2025 - 21st Aug, 2025

- 569 An Arts & Crafts oak open bookcase, fitted with four open shelves and single panelled cupboard door with elongated strap hinges and latch handle, 111cm wide x 119cm high x 35cm deep.  
**£50-100**
- 570 A mid-century double sided teak free-standing display unit, fitted with open shelves and sliding cupboard sections, raised on four tapered rectangular supports, 91cm wide x 183cm high x 38cm deep.  
**£70-150**
- 571 A late 18th/ early 19th century oak longcase clock, John Brownless, Staindrop, Durham, the brass dial with brass chapter ring bearing Arabic and Roman numerals with subsidiary date aperture, the movement striking on a bell within a caddy top hood with dentil frieze, the trunk door flanked by fluted quarter columns on a rectangular base and plinth, pendulum and single weight present, approximately 225cm high.  
**£100-200**
- 572 A 19th century oak longcase clock, the enamel dial with Roman numerals, subsidiary and date dials, the twin train four pillar striking on a bell, the hood with broken scroll pediment, the arched trunk door flanked by fluted quarter columns, winding key, pendulum and weights present, 221cm high.  
**£70-150**
- 573 A late 18th/ early 19th century mahogany longcase clock, Penman, Perth, the 14" circular dial with Arabic numerals, subsidiary and date dials, painted with the Arms of Finlayson and Arms of Urquhart, the twin train four pillar movement striking on a bell, the rectangular hood with broken scroll pediment centred by a rectangular tablet inlaid with Prince of Wales feathers, the trunk door flanked by canted angles on a rectangular base with bracket feet, two pendulums and weights present, 227cm high.  
Footnote: The watch and clockmaking firm of Penman where in business from the late 18th century to the late 1830's, both in Perth and Dunfermline. The possible couple concerned were Robert Finlayson, born 10th January 1780, died ?, Balgalken, Ferintosh, Black Isle in the county of Nairnshire; and Unnie Urquhart, baptised 27th December 1776, died ?; they were married at Uquhart & Logie Wester in Nairnshire on the 4th February 1814. Robert was the son of John Finlayson and his wife Margaret McLeod, whilst Unnie as the daughter of John Urquhart and Margaret Reid. The Urquharts lived at Leaniag within the Parish of Urquhart & Logie Wester.  
**£150-300**
- 574 A late 18th/ 19th century mahogany longcase clock, Park, Liverpool, the brass dial with silvered chapter ring bearing Arabic and Roman numerals with subsidiary seconds dial and date aperture, the arch with engraved scroll detail with figurative spandrels, the twin train four pillar movement striking on a bell, contained with rectangular hood with broken scroll pediment and dentil frieze, above a boxwood lined trunk door flanked by fluted quarter columns, on a rectangular base with bracket feet, winding key, pendulum and weights present, 223cm high.  
**£70-150**
- 575 A late 19th/ early 20th century walnut wing armchair, the upholstered back, arms and seat raised on tapered cabriole supports with pointed feet, 120cm high x 84cm wide.  
**£70-150**
- 576 An early 20th century oak table canteen case, fitted with two green baize lined drawers and a hinged rectangular top opening to a green baize lined interior, 56cm wide x 92cm high x 40cm deep.  
**£30-70**



## Antiques & Interiors, 20th Aug, 2025 - 21st Aug, 2025

- 577 A group of furniture to include an Antique fall-front bureau, 83cm wide; a reproduction mahogany bureau, 76cm wide; and a Victorian mahogany chair, refashioned as a stool with green and blue striped seat, 49cm high (3).  
**£30-70**
- 578 An Antique oak lowboy, the rounded rectangular top with moulded edge above a central frieze drawer with chip-carved detail, flanked by two deeper drawers, raised on tapered cabriole supports, 78.5cm wide x 71cm high x 53cm deep.  
**£40-80**
- 579 A mahogany extending dining table, enclosing one additional leaf, with gadrooned carved edge raised on four scroll carved cabriole supports with claw and ball feet, 178cm long (extended) x 78cm high x 106cm wide.  
**£20-50**
- 580 A dining room suite comprising a mahogany drop-leaf dining table on four tapered square section supports, 138cm long; four mahogany and marquetry inlaid dining chairs with green upholstered drop-in seats; and a Victorian oak sideboard fitted with two frieze drawers over two cupboard doors below, 152cm wide x 95cm high.  
**£50-100**
- 581 A vintage wicker picnic hamper, 54cm wide x 23cm high x 35cm deep.  
**£20-50**
- 582 An early 20th century spindle back armchair, 86cm high.  
**£30-70**
- 583 A Victorian mahogany two part bookcase, the upper section with two glazed cupboard doors opening to a fitted interior with open shelves, on a base fitted with two frieze drawers over two arched panel cupboard doors flanked by scroll brackets, raised on a plinth, 143cm wide x 176cm high x 55cm deep.  
**£70-150**
- 584 A 19th century mahogany washstand, the hinged rectangular top opening to a typically fitted interior, above a cupboard door and shallow drawer, raised on square supports, 38cm wide x 84.5cm high x 38cm deep.  
**£30-70**
- 585 A pair of modern Chinese reverse painted glass pictures; and five assorted decorative oil paintings to include J Small, figures on a beach at low tide, oil on canvas, signed lower left, in giltwood slip, 39.5cm x 58cm; a two masted galleon by J R Roughead 1971, in white painted frame, 69cm x 100cm; and three other decorative pieces.  
**£50-100**
- 586 A late 19th/ early 20th century mahogany drop-leaf dining table, 91cm wide x 72cm high.  
**£20-50**
- 587 Three assorted mahogany pot cupboards, each with a single cupboard door, the tallest 38cm wide x 82cm high x 33cm deep.  
**£30-70**
- 588 A 20th century George III style upholstered armchair, on scroll carved claw and ball feet, 73cm wide x 96cm high.  
**£50-150**
- 588A A 19th century rosewood work table, the rectangular top with twin drop-leaves above a shallow frieze drawer with fitted interior and pull-out well below, raised on baluster octagonal column and concave platform base with four scroll feet with recessed castors, 76.5cm wide (extended) x 71cm high x 44cm deep.  
**£70-150**
- 589 A George III style reproduction walnut serpentine sideboard, the shaped top above two frieze drawers and a blind drawer, flanked by cupboard doors on either side, raised on four tapered square supports with spade feet, 167.5cm wide x 92cm high x 59cm deep.  
**£40-80**
- 590 A pair of carved and painted wooden two light wall sconces, the backs carved with angels head, wings, fruit and foliage, 76cm long.  
**£40-80**
- 591 A 19th century Regency style mahogany sofa, the upholstered back, arms and seat on a scroll and foliate carved frame, raised on tapered cylindrical supports with flattened bun feet, 222cm long x 83cm high x 62cm deep.  
**£150-300**



## Antiques & Interiors, 20th Aug, 2025 - 21st Aug, 2025

- 592 An early 20th century mahogany extending dining table, possibly Whytock & Reid of Edinburgh, enclosing two additional leaves, raised on tapered cylindrical supports with foliate carved pointed pad feet, 260cm long (with leaves in) x 73cm high x 137cm wide; together with a harlequin set of eight mahogany dining chairs comprising a pair of carver chairs and a set of six ladder back chairs, all with corresponding tartan upholstered drop-in seat pads.  
**£150-300**
- 593 A vintage circus poster 'Circo Italiano, Le Plus Grand Cirque Italien', unframed 101cm x 71cm.  
**£40-80**
- 594 A 19th century mahogany and ebony lined stage back breakfront sideboard, the upright open back supported by turned spindles, above a central blind frieze drawer with gilt metal Anthemion mount, flanked by two drawers on either side, and two further deep bottle drawers, each with internal fitted divisions, raised on six tapered square supports with reeded detail, 212cm wide x 109cm high x 83cm deep.  
**£100-200**
- 594A A pair of Hartebeest horn and skull trophies, mounted on oak shields with plaques inscribed 'Togoland 1914', approximately 90cm long.  
**£100-200**
- 595 Two fire fenders comprising a Georgian bowfront fender with fretcut frieze, 120cm wide; and a Victorian Aesthetic movement fender with brass rail, 111cm wide.  
**£30-70**
- 596 An early 20th century mahogany sideboard, the rectangular top above two frieze drawers with blind fretwork detail over two cupboard doors, opening to a fitted interior with single shelf, raised on short cabriole supports with pad feet, 153cm wide x 103cm high x 54cm deep.  
**£40-80**
- 596A A pair of gilt metal twin-handled table lamps, 54.5cm high to top of bulb holder; together with a pink and white ceramic table lamp, 38cm high to the top of bulb holder.  
**£50-100**
- 597 A Chinese darkwood square shaped coffee table, centred with a pierced foliate roundel within a pierced geometric border, with glass top, raised on square section supports with slightly incurved foot detail, 100cm square x 50cm high.  
**£70-150**
- 598 An Edwardian mahogany, satinwood, ebony and boxwood lined three piece bedroom suite comprising a wardrobe centred with two cupboard doors over an open recess, two small drawers and three graduated drawers flanked on either side by mirrored doors, 194cm wide x 214cm high x 62cm deep; a mirror back dressing table, (mirror plate loose), 123cm wide; and a bedside locker, 74cm high.  
**£50-100**
- 599 A George III style mahogany secretaire bookcase, the upper section with moulded cornice and dentil frieze above a pair of astragal glazed cupboard doors, opening to a fitted interior with three adjustable shelves, on a base with secretaire drawer and pair of cupboard doors below, raised on bracket feet, 115cm wide x 225cm high x 53.5cm deep.  
Ivory Act 2018 (2022) compliant with non-transferable APHA registration, reference 9A2RZG7S.  
**£40-80**
- 600 An early 20th century oak towel rail, 66cm wide x 93cm high.  
**£30-70**
- 601 A 19th century mahogany hall chair, the oval back centred with a shield shaped panel, above a solid plank seat on tapered cylindrical supports, 86cm high.  
**£30-70**
- 602 A 19th century mahogany and boxwood lined secretaire chest, fitted with a central secretaire drawer flanked on the left by two small drawers, on the right by a deep drawer, over three long graduated drawers, raised on bracket feet, the plinth with conch shell inlay, lacking handles, 122cm wide x 118cm high x 54cm deep.  
**£40-80**
- 603 Seven framed botanical prints after Pierre-Joseph Redoute, all framed and glazed 56cm x 44.5cm.  
**£40-80**
- 604 A George III style mahogany serpentine sideboard, fitted with a central frieze drawer flanked by two deep drawers, raised on six tapered square section supports with fluted details, 167cm wide x 86.5cm high x 64cm deep.  
**£40-80**
- 604A An Edwardian mahogany and satinwood banded table top canteen, containing assorted EP cutlery and flatware, 44cm wide.  
**£20-50**



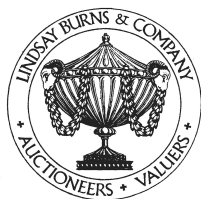
## Antiques & Interiors, 20th Aug, 2025 - 21st Aug, 2025

- 605 A Zanzibar type studded chest, the hinged rectangular cover decorated with fretcut brass work and brass studded detail, opening to a red velvet lined interior with single compartment, the front fitted with three shallow drawers, 78cm wide x 34cm high x 42cm deep.  
**£40-80**
- 606 A late 19th century mahogany breakfront wardrobe, with moulded cornice over central mirror door, flanked by panelled cupboard doors on either side, raised on a plinth base, 211cm wide x 215.5cm high x 75cm deep; together with a late 19th century walnut mirror back dressing chest, the upright back fitted with a rectangular bevelled mirror plate over two shallow drawers, on a base fitted with two short and two long drawers, on a plinth resting on castors, 106.5cm wide.  
**£70-150**
- 607 A Victorian giltwood dressing table stool, the rectangular top with serpentine edge upholstered in coloured needlework, raised on four cabriole supports with scroll carved feet, 56cm wide x 45cm high x 46cm deep.  
**£50-100**
- 608 A painted satinwood window seat, the rectangular seat with canework panel and loose cushion, flanked by upright sides with double canework panels, raised on four tapered square supports with spade feet, with painted details of flowers, scrolls and stars, 102cm wide x 73.5cm high x 36cm deep.  
**£50-100**
- 609 A painted display cabinet, one piece, fitted with three glazed cupboard doors, the outer two locked and no key present, above three cupboard doors below, raised on stylised bracket feet, 194cm wide x 205cm high x 39cm deep.  
**£100-200**
- 610 An Antique French Provincial blondewood dresser, the upright back with three open plate racks above a pair of cupboard doors, on a base fitted with three frieze drawers over two panelled cupboard doors, raised on four short cabriole supports, with fluted and fan carved detail to the lower part, 166cm wide x 229cm high x 69cm deep.  
**£250-500**
- 611 A 19th century mahogany Chesterfield type sofa, with later upholstery and loose cushions, approximately 208cm long x 70cm high x 90cm deep.  
**£70-150**
- 612 A 19th century mahogany D-end dining table, raised on fourteen tapered square section supports, 283cm long x 73cm high x 122cm deep.  
**£100-200**
- 612A A pair of mahogany and brass fireside club fender type seats, L-shaped, 61cm wide x 48cm high.  
**£70-150**
- 613 A clear and stained leaded glass panel commemorating Robert The Bruce, 65cm x 98cm.  
**£50-100**
- 613A A brass fire fender with pierced fretwork detail, raised on five paw feet, 123cm wide; together with a brass coal bin and cover, with copper stud detail, lion mask and ring handles, raised on three paw feet, 42cm high.  
**£40-80**
- 613B A 19th century mahogany hanging corner cabinet of small size with single astragal glazed door, 47cm wide x 80.5cm high; together with a 19th century mahogany corner washstand, 60cm wide x 119cm high.  
**£40-80**
- 614 A 19th century mahogany side cabinet/ low cupboard, the rectangular top with moulded edge above a pair of cupboard doors opening to a fitted interior with two adjustable shelves, raised on a plinth base, 149cm wide x 91.5cm high x 32cm deep.  
**£40-80**
- 614A An early 20th century tartan upholstered mahogany X-frame stool, the rectangular upholstered seat flanked by upholstered arms, raised on foliate carved X-frame supports united by a turned stretcher, 82cm wide x 71.5cm high x 49cm deep.  
**£70-150**
- 615 A vintage Ladderax shelving system comprising two drawer console section, two two-door sliding cupboard sections, two three-drawer drawer sections, two open shelves and four rails.  
**£100-200**



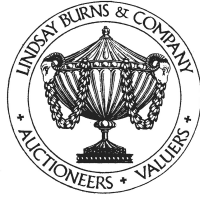
## Antiques & Interiors, 20th Aug, 2025 - 21st Aug, 2025

- 615A A late 19th/ early 20th century French mahogany and gilt metal mounted writing table, the rectangular top with brown and gilt leather skiver, above two frieze drawers raised on four tapered cylindrical supports with fluted detail, 100cm wide x 76cm high x 60cm deep.  
**£70-150**
- 615B A gilt framed rectangular bevelled wall mirror, 74cm x 98cm.  
**£30-70**
- 615C A pair of chipboard circular drape tables, 79cm diameter x 73cm high.  
**£20-50**
- 615D A 19th century walnut and boxwood breakfront wardrobe, with central mirror door flanked by panelled cupboard doors on either side, 238cm wide x 223cm high x 65cm deep.  
**£100-200**
- 616 A pair of William IV mahogany carver armchairs, with tartan upholstered drop-in seat pads, 90cm high.  
**£70-150**
- 617 A vintage oak roll-top desk, 91cm wide x 113cm high x 65cm deep.  
**£50-100**
- 618 A George III mahogany cupboard/ butlers cupboard, the rectangular top with moulded edge above a pair of panelled cupboard doors, opening to a fitted interior with four pull-out half drawers, over two drawers below, raised on shaped bracket feet, 128cm wide x 140cm high x 63cm deep.  
**£100-200**
- 619 A 19th century mahogany and brass bound two part military secretaire chest, the upper part set with three small drawers and a secretaire drawer, on a base fitted with two long drawers, raised on tapered cylindrical supports, all with recessed brass handles, 107cm wide x 122.5cm high x 51.5cm deep.  
Ivory Act 2018 (2022) compliant with non-transferable APHA registration, reference C5N67Q4S.  
**£100-200**
- 619A A group of four chairs comprising a pair of shield back Hepplewhite style chairs; a spindle back armchair; and a red lacquered Regency style armchair.  
**£20-50**
- 620 A 19th century mahogany and brass bound two part military campaign chest by Army & Navy, the upper part fitted with a deep drawer flanked by two small drawers either side over a long drawer, the central deep drawer with makers label, the base fitted with two long graduated drawers, raised on tapered cylindrical supports, all with recessed brass handles, 113.5cm wide x 117cm high x 56cm deep.  
**£150-300**
- 621 A George III style mahogany side table, the rectangular top with moulded edge above a single frieze drawer, raised on square chamfered supports with channelled line detail, 78cm wide x 73cm high x 45cm deep.  
**£30-70**
- 621A A reproduction mahogany and brass bound square military type occasional table, 37cm square x 40cm high; a circular topped occasional table on four baluster turned supports united by an X-shaped stretcher, 59cm diameter; and a folding stool step, 59cm high (3).  
**£20-50**
- 622 A 19th century mahogany chest, fitted with three frieze drawers over three long graduated drawers, raised on bracket feet, 121cm wide x 104cm high x 54cm deep.  
**£50-100**
- 623 An Antique oak tabletop book press, 65cm wide x 70cm high x 43cm deep.  
**£50-100**
- 624 A pine hanging shelf, with moulded cornice over three open shelves, 135cm wide x 122cm high x 13.5cm deep.  
**£30-70**
- 624A A late 19th century bamboo side cabinet, fitted with two glazed doors opening to an interior of two open shelves, 93cm wide x 98cm high.  
**£50-100**
- 624B A modern blonde oak console table, fitted with two frieze drawers over an open shelf below, 120cm wide x 77cm high x 33cm deep.  
**£30-70**
- 625 An Antique pine pew, the sides with stick/ umbrella spills, 140cm wide x 98cm high x 51cm deep.  
**£100-200**



## Antiques & Interiors, 20th Aug, 2025 - 21st Aug, 2025

- |  |  |
|--|--|
| <p>626 A mid-century teak three piece lounge suite comprising four seat sofa, with loose cushion back and seat, 242cm wide; together with a pair of corresponding armchairs.<br/><b>£100-200</b></p> <p>627 A stained darkwood two tier open plate rack, carved with star and thistle motifs, 122cm wide x 57cm high.<br/><b>£30-70</b></p> <p>628 A Chinese Scholars bookcase, probably blondewood, Huali wood, fitted with three open shelves and two shallow drawers under the upper shelf, 90cm wide x 190cm high x 46cm deep.<br/><b>£100-200</b></p> <p>629 A North West Persian carpet, 20th century, the dark ink blue ground centred with a hexagonal lozenge shaped motif and two blue ground panels enclosing stylised animals within a geometric border, 326cm x 126cm.<br/><b>£100-200</b></p> <p>630 A Persian Heriz carpet, 20th century, the rectangular madder ground centred with a large stylised foliate medallion within ivory coloured spandrels enclosing serrated leaves, within a blue ground border of repeating foliate motifs, 253cm x 170cm.<br/><b>£400-600</b></p> <p>631 A Persian Hamadan runner, the abraded madder ground centred with an ink blue hexagonal shaped medallion enclosing stylised motifs, flanked by two further blue ground medallions on a ground decorated with stylised figures and animals, within a blue ground border of repeating geometric motifs, 280cm x 107cm.<br/><b>£100-200</b></p> <p>632 A Persian Hamadan long rug, the rectangular blue ground decorated with all-over pattern of stylised foliate motifs within repeating foliate borders, 280cm x 116cm.<br/><b>£100-200</b></p> <p>632A A prayer rug, 20th century, the ochre ground with mihrab shaped panel enclosing panels of stylised flowers, within a blue and madder ground border of repeating foliate motifs, 150cm x 125cm.<br/><b>£50-100</b></p> <p>633 A Chobi Kilim runner, the ivory ground worked in coloured threads with all-over design of geometric motifs in an orange and ochre coloured border, 236cm x 84cm.<br/><b>£70-150</b></p> | <p>634 A Maimana Kilim rug, the purple ground worked in coloured threads of all-over with geometric motifs, within an orange/ red coloured border, 191cm x 122cm.<br/><b>£70-150</b></p> <p>635 A Maimana Kilim runner, the ochre ground worked in coloured threads with all-over geometric motifs, within a blue/ green coloured border, 291cm x 84cm.<br/><b>£70-150</b></p> <p>636 A Baluchi rug, decorated with two lozenge shaped medallions enclosing stylised flowers, worked in orange, green, purple, black, rust and madder coloured threads, 134cm x 80cm.<br/><b>£30-70</b></p> <p>637 A Maimana Kilim runner, the ochre ground worked in coloured threads with all-over geometric motifs, within a blue/ green coloured border, 286cm x 80cm.<br/><b>£70-150</b></p> <p>638 A Maimana Kilim rug, the abraded blue/ green worked in coloured threads with all-over design of geometric motifs, within ivory coloured border, 184cm x 124cm.<br/><b>£70-150</b></p> <p>639 A Chinese silk carpet, the ivory coloured ground decorated with all-over design of bamboo, lotus and other flowers, within an ochre coloured border of stylised flowers and foliage, 170cm x 262cm.<br/><b>£50-100</b></p> <p>640 A Chinese silk carpet, the blue/ grey ground worked in coloured threads with all-over design of flowers and foliage, within a pink ground border with stylised flowers, 183cm x 290cm.<br/><b>£50-100</b></p> <p>641 A Persian carpet, the rectangular madder ground with all-over design of stylised flowers and foliage, within a blue ground border of repeating foliate motifs, (worn), 274cm x 356cm.<br/><b>£100-200</b></p> <p>642 A Persian Bakhtiari carpet, 20th century, the madder ground rectangular field with all-over design of stylised flowers and foliage, within an ivory ground of repeating foliate motifs, 382cm x 301cm.<br/><b>£400-600</b></p> |
|--|--|



## Antiques & Interiors, 20th Aug, 2025 - 21st Aug, 2025

- 643 A Persian Kashan carpet, the madder ground with all-over design of flowers and foliage, within a blue ground border of repeating foliate motifs, 394cm x 294cm.  
**£400-600**
- 644 A Persian rug, 20th century, 451cm x 311cm.  
**£70-150**
- 645 A machine-made Persian carpet, 300cm x 203cm.  
**£50-100**